

Metadata Architecture and Application Team /
MCN Taiwan – Standards SIG

Application of CDWA Lite – MuseFusion Platform

MCN Conference

CDWA Lite, Museumdat, and CCO Joint Forum
2008/11/15

Presenter - Ching-ju Cheng

Ya-ning Chen, Shu-jiun Chen, Ching-ju Cheng, Feng-chien Chung

MCN Taiwan- Standards SIG

- Project Name-
Museum Collection Fusion Project (MuseFusion)
- Start from-
the beginning of 2008
- Objectives-
Build a collection database to try various experiment on standards.



MuseFusion

- **2008** Goals-
 1. Evaluate the feasibility of CDWA Lite
 - (1) describing Taiwan's culture and archives
 - (2) used as the data exchange format in Taiwan on OAI-PMH technology

 2. Establish the Best Practice of CDWA Lite
(include the formation of: cataloging manual / control vocabulary...etc.)

MuseFusion

<http://mcntw-stds.teldap.tw:8080/musefusion/>

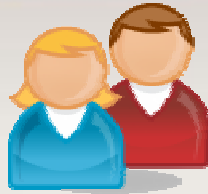


This year the SIG has implemented the prototype **MuseFusion**, adopting archives description standard (CDWA Lite) and network technology (OAI-PMH). All the mandatory elements of CDWA Lite are adopted by MuseFusion(except <21.1 Record ID>), but only **18 elements are adopted for web-based user interface.**

Structure	CDWA Lite
Content	CCO
Format / Encoding	XML, UTF-8
Exchange	OAI / OAICatMuseum

MuseFusion Features

Members of MuseFusion



■ CDWA Lite

Intended for
(1)contribution to union catalogues
(2)repositories using the Open Archives Initiative (OAI)



IT Experienced People

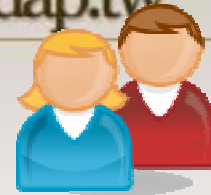
■ Members of MuseFusion

(1)Organization-museums, archives, universities, research centers and governmental ministries.
(2)Individual- Teachers, photographers, private collectors



Domain Experts, but have little or none digitization experience

MuseFusion Contributors



• Organization (Museum / Archive / University...)

Museum	National Palace Museum 國立故宮博物院 National Taiwan Museum 國立台灣博物館 National Museum of Natural Science 國立自然科學博物館 National Museum of History 國立歷史博物館
Archive	Academia Historica 國史館 National Archives Administration 檔案管理局
University	National Taiwan University 國立台灣大學
Ministry	Council for Hakka Affairs, Executive Yuan 行政院客家委員會 Taiwan Forestry Research Institute, Executive Yuan 行政院農委會林業試驗所
Research Center	Academia Sinica 中央研究院

• Individual (elementary school teacher / photographer/ private collector...)

Workflow

- 1. Use CDWA Lite to implement the prototype (include all mandatory elements, except <21.1 Record ID>).
- 2. Adopted 18 elements for web-based user interface.
- 3. Hold a Cataloging Workshop (Cataloging Manual is based on CDWA Lite and CCO)
- 4. Each member provides few records.



There are over 50 records in Musefusion .

博物館電腦網路協會台灣分會

Museum Computer Network, Taiwan Chapter
標準規範小組

博物館藏品資料互通實驗(MuseFusion)



MuseFusion 測試平台

[回首頁](#)

[關於MuseFusion](#)

[藏品區](#)

[成果及報告](#)

[討論區](#)

[參與單位及成員](#)

[相關網站](#)

[English](#)

[瀏覽 \(Browse\)](#)

[查詢 \(Search\)](#)

[使用者登入 \(Log in\)](#)

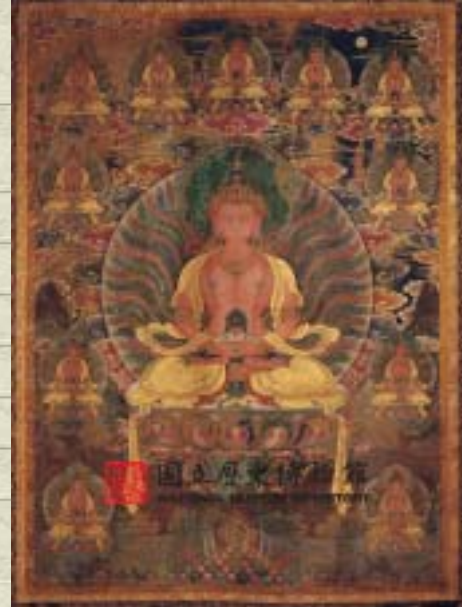
[使用者註冊 \(New User\)](#)

[資料管理頁](#)

MuseFusion測試平台

Record

編號 (number)	標題 (Title)	作者(Creator)	類型 (Object/Work- Type)	典藏單位/所在地 (Location/Repository)	Detail
49	Cloisonné box with lotus-spray decoration	unknown Chinese	artifacts	National Palace Museum	Detail
50	Tibetan Buddha	N/A	paintings	National Museum of History	Detail
51	臺大八十檔案 藝術書法比賽 作品	鍾麒先	書法	國立臺灣大學總務處文書組 檔案股	Detail
52	Tri-color Glazed Chimera	unknown Chinese	artifacts	National Museum of History	Detail
53	臺大八十檔案 藝術書法比賽 作品	金貞淑	書法	國立臺灣大學總務處文書組 檔案股	Detail
54	臺大八十檔案 藝術書法比賽 作品	簡子筠	書法	國立臺灣大學總務處文書組 檔案股	Detail



物件/作品 - 類型 (Object/Work - Type)	paintings
標題 (Title)	Tibetan Buddha
創作者 (Creator)	N/A
創作日期 (Creation Date)	Qianlong era of the Qing Dynasty
創作日期起 (Earliest Date)	1736
創作日期迄 (Latest Date)	1795
測量值 (Measurement)	240x169.5cm
典藏單位/所在地 (Location/Repository Name)	National Museum of History
主題 (Subject)	
描述註(Descriptive Note)	<p>Paintings of the Qianlong era of the Qing Dynasty were influenced by religious beliefs, so a large number of them portrayed Tibetan elements. It is said that this painting was a good luck painting given by Qianlong to his mother on the occasion of her birthday. In this Amitayus Buddha painting, the figure is holding a wish-fulfilling tree, which easily propagates and symbolizes "long life", which shows that this is a Buddha of Immeasurable Life. This is the best gift for wishing someone longevity. The main image appears repeatedly, symbolizing the repeated chanting of proverbs to spread the power of the dharma of the Buddhas and Bodhisattvas.</p>
描述註(Descriptive Note)	<p>The "Buddha of Immeasurable Life," in the collection of this museum is a reproduction of a Tibetan thangka. The main image gestures toward the sky and the earth and bears the sun, moon, water, and earth patterns. It is said that this painting was a good luck painting given by Qianlong to his mother on the occasion of her birthday. Some say that it is a representative work of the Zhongzheng Dian Hall, and some say that it was commissioned to a Tibetan artist. The features of the Buddha in this work are more tranquil and gentle than the usual dramatically rippling lines of the Tibetan style. The wide chest and thin waist continue on from the style of the Ming Dynasty's Yongle era. The celestial robe drapes down to both sides of the lotus seat, which is a characteristic of image paintings of the Qianlong era.</p>
紀錄來源 (Record Source)	National Museum of History
紀錄來源 (Record Source)	Zhang Ci-An. National Museum of History Editing Committee. "Fine Pieces of the National Museum of History Collection". Taipei, 1997.
紀錄來源 (Record Source)	Ge Wan-Zhang. "Questions about Tibetan Religious Art Imagery". Palace Academic Quarterly. Vo. 5-4. Taipei, 1988.

物件/作品 - 類型 (Object/Work - Type)	artifacts	
標題 (Title)	Cloisonné box with lotus-spray decoration	
創作者 (Creator)	unknown Chinese	
創作日期 (Creation Date)	Ming Dynasty, Ching-t'ai reign	
創作日期起 (Earliest Date)	1450	
創作日期迄 (Latest Date)	1456	
測量值 (Measurement)	6.3cm(height of body), 12.4cm(diameter of mouth), 634.6gram(weight)	
材質/技法 (Material/Techniques)	copperware; multi-color glaze, Cloisonné	
典藏單位/所在地 (Location/Repository Name)	National Palace Museum	
主題 (Subject)	plant flower passionflower (Indian-lotus)	

物件/作品 - 類型 (Object/Work - Type)	器物
標題 (Title)	明景泰掐絲琺瑯番蓮紋盒
其他標題 (Other Title)	銅琺瑯盒(景泰年製)
創作者 (Creator)	不詳
創作日期 (Creation Date)	明景泰(西元1450-1456年)
創作日期起 (Earliest Date)	1450
創作日期迄 (Latest Date)	1456
測量值 (Measurement)	全器高6.3公分，口徑12.4公分，重634.6公克。
材質/技法 (Material Techniques)	銅胎；多彩釉，掐絲
風格 (Style)	掐絲琺瑯
作業者/師承/地點	



使用者登入 (Log in)

chingju 您好!

資料管理區 (Data Management)

cdwalite 中文資料	新增	刪除	修改
cdwalite English record	Insert	Delete	Update

[回首頁 \(Homepage\)](#)

Insert English Data into Database

The Identifier of this record is **MF_240**, please insert cdwalite format metadata

Object/Work - Type(madatory)

Title(madatory)

Other Title

Creator(madatory) If you don't know it, please fill in "N/A".

Measurements

Material/Techniques please use ";" to separate Material and Techniques.

Style

Creation Date(madatory)

Earliest Date(madatory)

Latest Date(madatory)

Current Repository(madatory)

Discovery Location

Subject

Classification

Descriptive Note

Inscriptions

Descriptive Metadata

1. **Object/Work type** (CDWA Lite <1.1 Object/Work type>)
2. **Title** (CDWA Lite <2.1.1 Title>)
3. **Other Title**
4. **Creator** (CDWA Lite <3.Display Creator>)
5. **Measurements** (CDWA Lite <5.Display Measurements>)
6. **Materials/Techniques** (CDWA Lite <7.Display Materials/Techniques>)
7. **Style** (CDWA Lite <10.1 Style>)
8. **Creation Date** (CDWA Lite <12. Display Creation Date >)
9. **Earliest Date** (CDWA Lite <13.1.2 Earliest Date>)
10. **Latest Date** (CDWA Lite <13.1.3 Latest Date>)
11. **Current Repository** (Cdwa Lite <14.1.1 Location/Repository Name>)
12. **Discovery Location** (Cdwa Lite <14.1.1 Location/Repository Name>)
13. **Subjects** (CDWA Lite <15.1.2. Sub-element: Indexing Subject Term >)
14. **Classification** (CDWA Lite <16.1. Sub-element: Classification >)
15. **Description** (CDWA Lite <17.1.1. Sub-element: Description/Descriptive Note >)
16. **Inscriptions** (CDWA Lite <18.1 Inscriptions>)

Administrative Metadata

17. **Resource Source** (CDWA Lite p32 <22.1.10 Resource Source>)
18. **Resource link** (CDWA Lite p30 <22.1.1 Link resource>)

<2.1.1 Title>
Attributes: type, pref, lang

<14.1.1 Location/repository Name>
Attributes: type, tersourceID
Recommended values for type:
discoveryLocation

Elements in MuseFusion¹

CCO

1. **Object/Work type** (CDWA Lite <1.1 Object/Work type>)
2. **Title** (CDWA Lite <2.1.1 Title>)
3. **Other Title**
4. **Creator** (CDWA Lite <3.Display Creator>)
5. **Measurements** (CDWA Lite <5.Display Measurements>)
6. **Materials/Techniques** (CDWA Lite<7.Display Materials/Techniques>) (CCO p123-125)
7. **Style** (CDWA Lite <10.1 Style>) (CCO p156)
8. **Creation Date** (CDWA Lite <12. Display Creation Date >) (CCO p157-158)
9. **Earliest Date** (CDWA Lite <13.1.2 Earliest Date>)
10. **Latest Date** (CDWA Lite <13.1.3 Latest Date>)

Elements in MuseFusion²

11.Current Repository (Cdwa Lite <14.1.1 Location/Repository Name>) (CCO p183)

12.Discovery Location (Cdwa Lite <14.1.1 Location/Repository Name>)

13.Subjects (CDWA Lite <15.1.2. Sub-element: Indexing Subject Term >)

14.Classification (CDWA Lite <16.1. Sub-element: Classification >) (CCO p235)

15.Description (CDWA Lite <17.1.1. Sub-element: Description/Descriptive Note >)

16.Inscriptions (CDWA Lite <18.1 Inscriptions>)

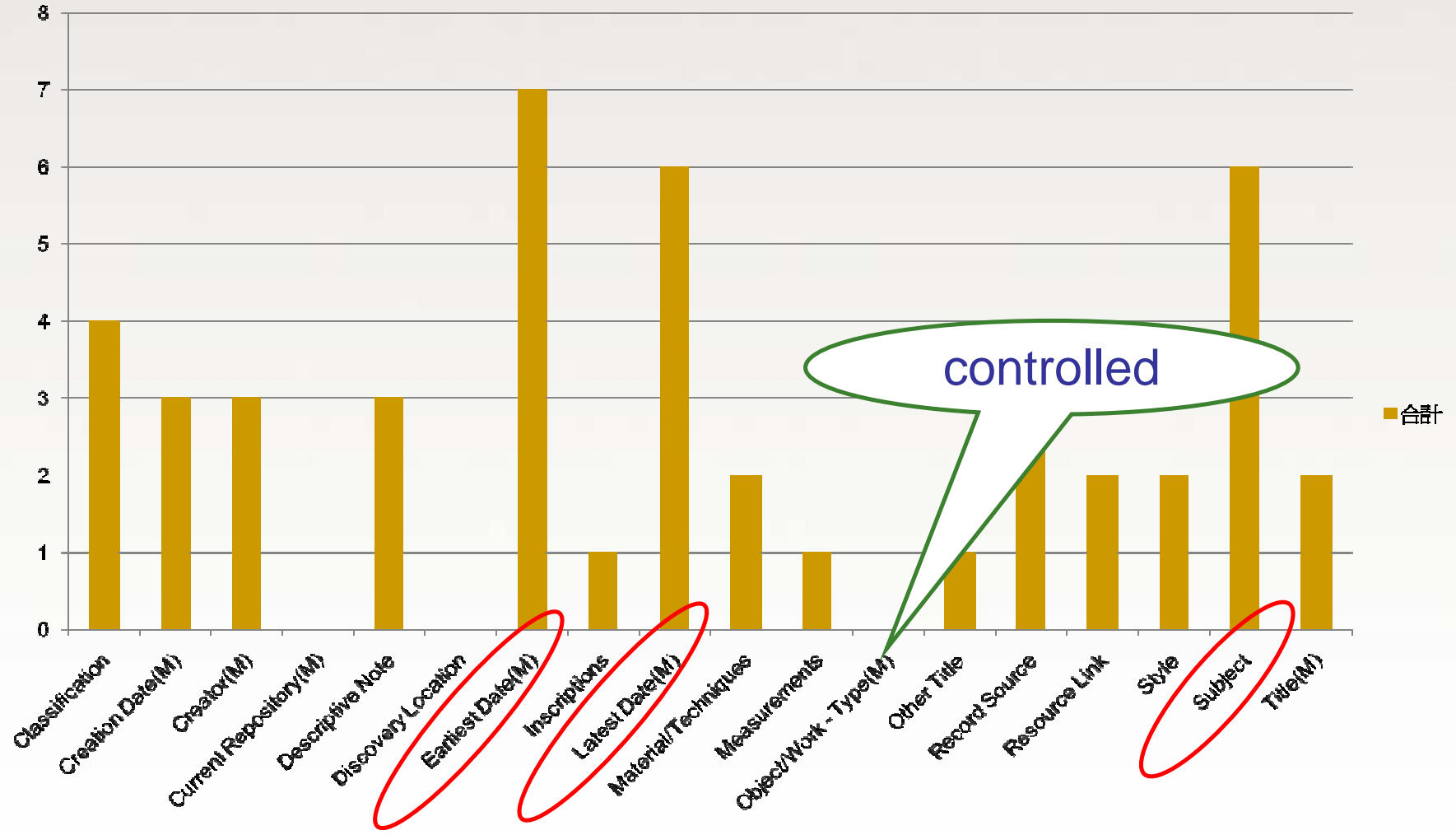
17.Resource Source (CDWA Lite p32 <22.1.10 Resource Source>)

18.Resource link (CDWA Lite p30 <22.1.1 Link resource>)

Cataloging Problems

Overview

合計



Cataloging Problems

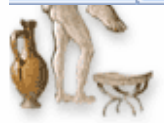
- **1. Object/Work type** (CDWA Lite <1.1 Object/Work type>)
 - Data values: controlled(AAT)- textiles, paintings, calligraphy, artifacts, specimens, architecture, photographs, and others.

	1st	2nd	3rd	4th	5th	6th
1 建築	Object Facet	Object Genres (Hierarchy Name)	<object genres (Guide Term)>	architecture (object genre)		
2 器物				artifacts		
3 編織				<object genres by material>	textiles	
4 標本				<object genres by function>	samples	specimens
5 書法		Visual and Verbal Communication	Visual Works (Hierarchy Name)	<visual works (Guide Term)>	<visual works by medium or technique>	calligraphy (visual works)
6 攝影						
7 繪畫						paintings

檔案(F)	編輯(E)	檢視(V)	11	Getty	1st	2nd	3rd	4th	5th	6th	8th
			12	1 architecture and room elements	Object Facet	Object Genres (Hierarchy Name)	<object genres (Guide Term)>	architecture (object genre)			
			13	2 drawings		Visual and Verbal Communication	Visual Works (Hierarchy Name)	<visual works (Guide Term)>	<visual works by medium or technique>	drawings (visual works)	
			14	3 manucript		Visual and Verbal Communication	Information Forms (Hierarchy Name)	<information forms (Guide Term)>	<document genres>	<document genres by conditions of production>	manuscripts (document genre)
			15	4 Decorative objects and vases		Furnishings and Equipment	Containers (Hierarchy Name)	containers (receptacles)	vessels (containers)		
			16	5 fumiture		Furnishings an	Furnishings (Hierarchy Name)	fumishings (artifacts)	<fumishings by form or function>	fumiture	

Explore Art Search

- Exhibitions
- Explore Art
- Education
- Research and Conservation
- Bookstore
- Games
- About the J. Paul Getty Museum



Select a Type of Art

- Select a Type of Art
- Architecture and Room Elements
- Decorative Objects and Vases
- Drawings
- Furniture
- Implements and Costume
- Manuscripts
- Paintings
- Photographs
- Sculpture

Collection Overview
Explore highlights of the J. Paul Getty Museum's

1. Object/Work type (CDWA Lite <1.1 Object/Work type>)



Kina Shell Ornament

artifact or specimen?

AAT-Note

- **Specimens**

Note: Individual samples or units that are deliberately selected for examination, display, or study, and are usually chosen as typical of their kind.

- **Artifacts**

Note: Generally, objects made or altered by humans, typically manually portable products of human workmanship, such as tools, utensils, objects for personal adornment, or art. Specifically, in archaeology, an artifact is an object made by a human culture, as distinguished from natural remains, and later recovered by an archaeological endeavor. In the context of objects specifically collected by museums, see also "cultural artifact." Do not use for the technical and medical sense, that is, for a product or effect that is not present in the natural state of an organism or system, but occurs due to the investigation itself or due to some other extraneous activity.

物件/作品 - 類型
(Object/Work - Type) 器物 **artifacts**

標題 (Title) 貝殼項飾

其他標題 (Other Title) ??

其他標題 (Other Title) Kina Shell Ornament

創作者 (Creator) 巴布亞紐幾內亞高地人

創作日期 (Creation Date) 20世紀

創作日期起 (Earliest Date) 1950

創作日期迄 (Latest Date) 1993

測量值 (Measurement) 38x22x6公分

材質/技法
(Material/Techniques) 金唇珍珠牡蠣殼，貝殼，線，亞答纖維；編織，繡飾

風格 (Style) 新幾內亞高地巴布亞語族

典藏單位/所在地
(Location/Repository Name) 國立自然科學博物館大洋洲展示區

發現位置 (Discovery
Location) 巴布亞紐幾內亞

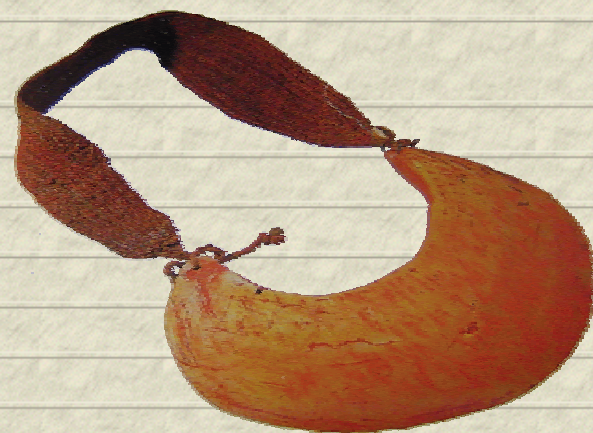
主題 (Subject) 財產 交換物件 裝飾 貝殼項飾 貨幣

分類 (Classification) 標本 **specimens**

描述註(Descriptive Note) 頸帶紅棕色

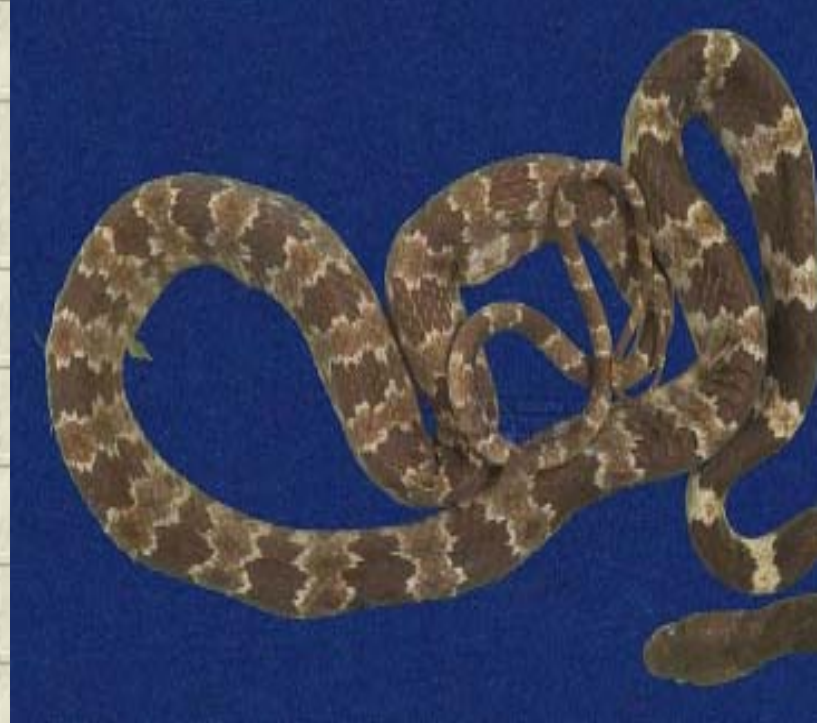
描述註(Descriptive Note) 基那(Kina)貝殼項飾，為新幾內亞高地傳統貨幣，巴布亞紐幾內亞現行貨幣亦稱為Kina，為財富、地位的象徵。居民往往在祭典中穿戴，項帶以亞答纖維線織成，繡飾半月型珍珠牡蠣貝。

題刻 (Inscriptions) 無



Repository
classification

物件作品 - 類型 (Object Work - Type)	標本 specimens
標題 (Title)	白梅花蛇
其他標題 (Other Title)	Lycodon ruhstrati(拉丁學名)
其他標題 (Other Title)	White plum blossom snake
創作者 (Creator)	不詳
典藏單位所在地 (Location/Repository Name)	國立臺灣博物館
發現位置 (Discovery Location)	台灣南投縣
主題 (Subject)	標本 蛇
分類 (Classification)	爬蟲類(蛇亞目)標本
分類 (Classification)	脊索動物門-脊椎動物亞門-爬蟲綱-真爬蟲亞綱-鱗龍下綱-有鱗目-蛇亞目-真蛇下目-黃領蛇科-黃領蛇亞科-白蛇屬



Repository
classification

taxonomy: kingdom-Division-Class-Order-Family- Genus

3. Creator

(CDWA Lite <3.Display Creator>)

- What if the work has too many creators and contributors?
 - **Title-**
Water-Powered Armillary (Sphere) and Celestial (Globe) Tower
 - **Measurements-**
7x7x12M



Problem about cataloging Creator



- Water-Powered Armillary (Sphere) and Celestial (Globe) Tower
 - Design plan from the book of Su Song (original inventor, 14th century)
 - National Museum of Natural Science (research and re-build the object)
 - 助理研究員郭美芳小姐在漢堡德館長的指導之下即著手研究解讀《新儀象法要》及繪製施工圖 (Curator)
 - 本館同仁陳有德、林政傑二位負責打造樞輪機件
 - 國立中央大學機械系陸鐵誠教授研究齒輪傳動系統裝置 (University)
 - 中央研究院歷史研究所黃一農教授研究「渾象」星
 - 製作「渾儀」、「渾象」 (Company)

Catalog the research and re-build process in <17.1.1 description/descriptive note>

Thanks For Your Attention~

ChingJu(Eliza) Cheng,
chingju@gate.sinica.edu.tw

