

Toward a Multilingual Thesaurus: Strategies and Approaches

Shu-Jiun Chen, Ya-ning Chen,
Ching-ju Cheng, Yu-chun Chiu

Academia Sinica
Taiwan e-Learning and Digital Archives Program (TELDAP)

The TELDAP@Getty
2008.07.14

The Semantic Digital Library at Global Level

- When users visit the TELDAP system, they can...
 - *Browse* collections' knowledge structures
 - Search both information retrieval (individual objects) and *knowledge retrieval (associative objects)*
 - Use as a *Research tool* and *Knowledge-management tool*
 - Have *multilingual* access
 - *Integrate* TELDAP collections

Challenges of the TELDAP

- The current status are ...widely distributed, huge, multi-schema-based TELDAP
 - ...Collections (amount, disciplines)
 - ...Union Catalogue (UC) Metadata Records
 - ...Sets of Controlled Vocabularies
 - ...different metadata qualities
 - ...different view points of documentation
- Current Plans
 - Multilingual retrieval of the collections
 - To Build the knowledge base system

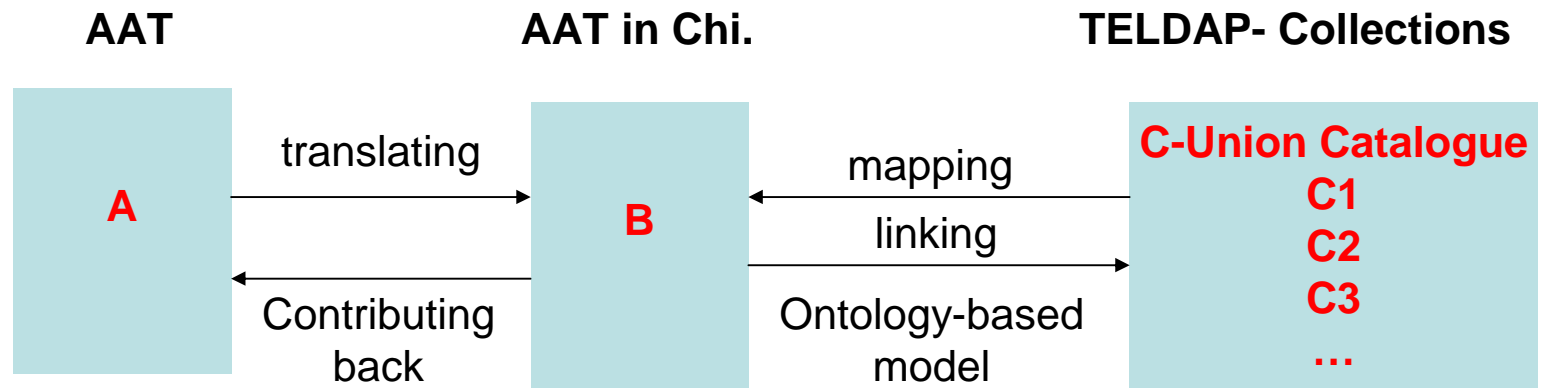
The Objectives

- Develop a multilingual KOS (Knowledge Organization System)
 - **Multilingual** Thesaurus
 - Collaboration with Getty's AAT
 - AAT in Chinese
 - Scope: disciplines of art, architecture and material culture
- Integrate different KOSs of the TELDAP
 - Enable **interoperability** of TELDAP Collections

The Research Questions

- To what extent will the TELDAP content be included in this task? (scoping issue)
- To what degree can the AAT in Chinese be achieved? (integration issue)
- Are the structure and the terms of AAT suitable to the TELDAP collection? (localization issue)

The Framework of the Chinese AAT Translation in the Context of Semantic Digital Libraries



- Complete list of terminologies in terms of Chinese Arts and Culture

- 「Object warrant」
- Both International & Localization Thesaurus

- Integration
- Interoperability
- A Semantic DL

The Approaches of developing multilingual thesaurus

- Combining existing KOSs
 - Linking existing CVs to the AAT
- Building a new sub-hierarchies under the facets
- Translating some terms from the AAT or TELDAP into another language

A Preliminary Study of Linking existing CVs to the AAT: AAT Facets and Hierarchies

- ASSOCIATED CONCEPTS FACET
 - Associated Concepts
- PHYSICAL ATTRIBUTES FACET
 - Attributed and Properties
 - Conditions and Effects
 - Design Elements
 - Color
- STYLES AND PERIODS FACET
 - Styles and Periods
- AGENTS FACET
 - People
 - Organizations
 - Living Organisms
- ACTIVITIES FACET
 - Disciplines
 - Functions
 - Events
 - Physical and Mental Activities
 - Processes and Techniques
- MATERIALS FACET
 - Materials
- OBJECTS FACET
 - Object Groupings and Systems
 - Object Genres
 - Components
 - Built Environment
 - Furnishings and Equipment
 - Visual and Verbal Communication

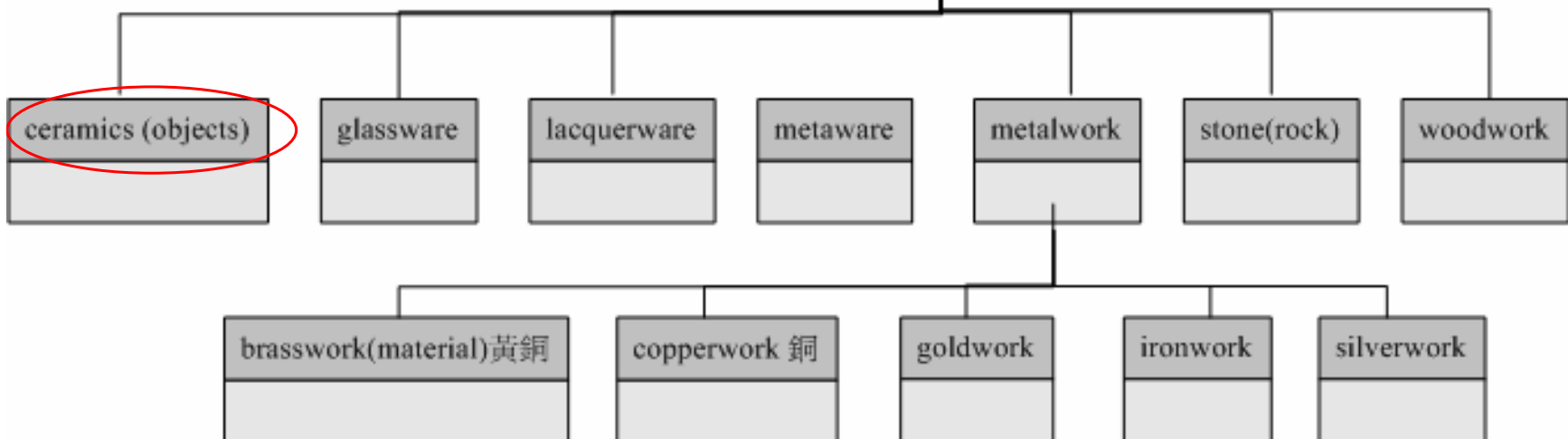
Preliminary Study

- OBJECTS FACET
 - Object Groupings and Systems
 - Object Genres
 - Components
 - Built Environment
 - Furnishings and Equipment
 - Visual and Verbal Communication

Object Genres

National Palace Museum Metadata	Control Vocabularies
Media (類別)	Bronzes. Metalwork (銅器、金屬器) Ceramics(陶瓷器) Jade and stone work (玉石器) wood, bamboo and lacquer work (木竹漆器) tooth, bone, horn, clam, leather work (牙骨角蚌皮器) enamel and glassware (琺瑯器與玻璃器) others

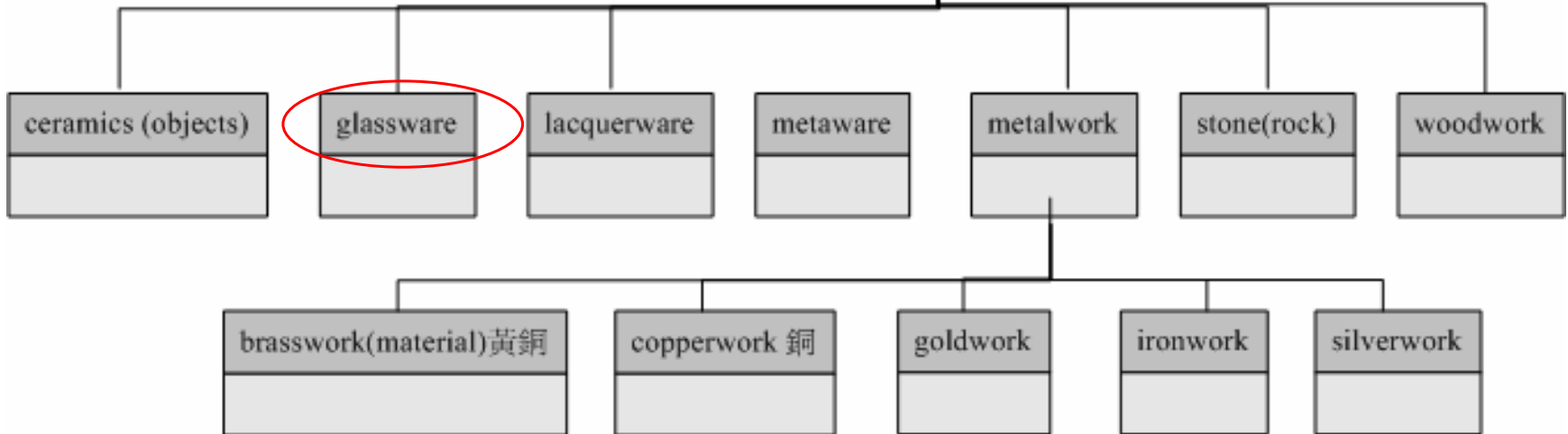
Objects Face - Object Genres - <object genres> - <object genres by material>



Object Genres

National Palace Museum Metadata	Control Vocabularies
Media (類別)	Bronzes. Metalwork (銅器、金屬器) Ceramics (陶瓷器) Jade and stone work (玉石器) wood, bamboo and lacquer work (木竹漆器) 牙骨角蚌皮器 enamel and glassware (琺瑯器與玻璃器) others (其他)

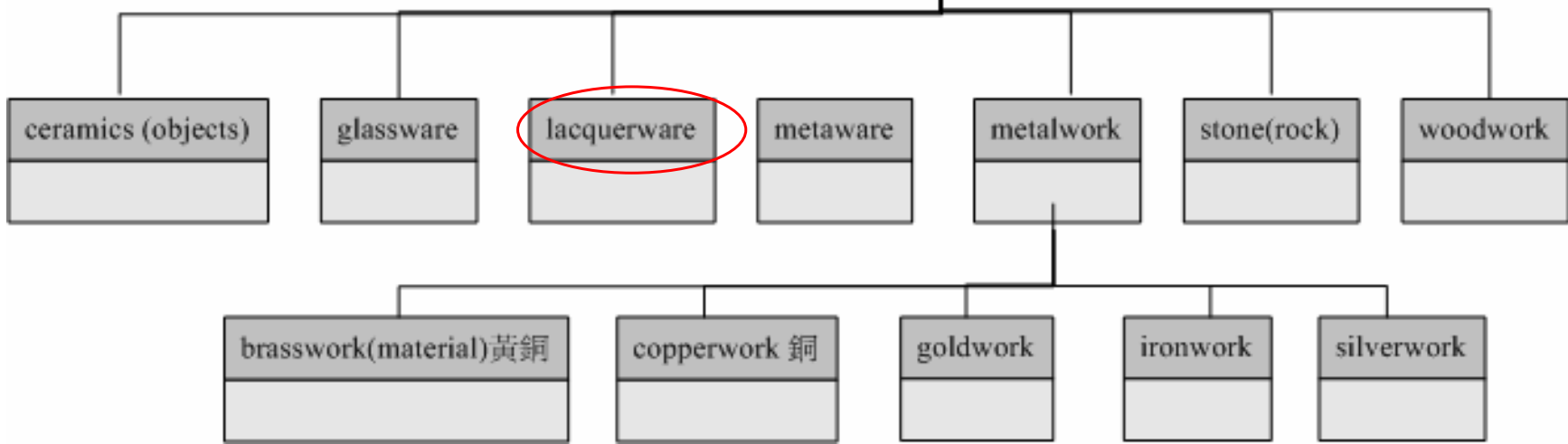
Objects Face - Object Genres - <object genres> - <object genres by material>



Object Genres

National Palace Museum Metadata	Control Vocabularies
Media (類別)	Bronzes. Metalwork (銅器、金屬器) Ceramics (陶瓷器) Jade and stone work (玉石器) wood, bamboo and lacquer work (木竹漆器) 牙骨角蚌皮器 enamel and glassware (琺瑯器與玻璃器) others (其他)

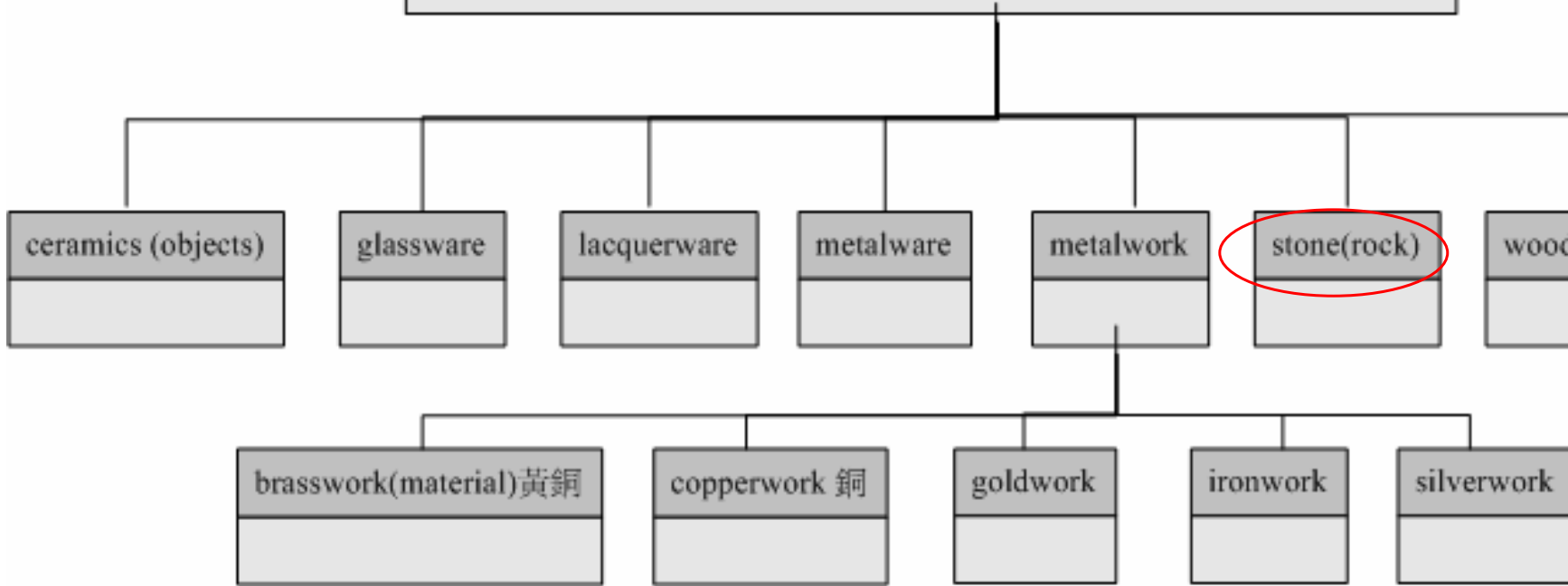
Objects Face - Object Genres - <object genres> - <object genres by material>



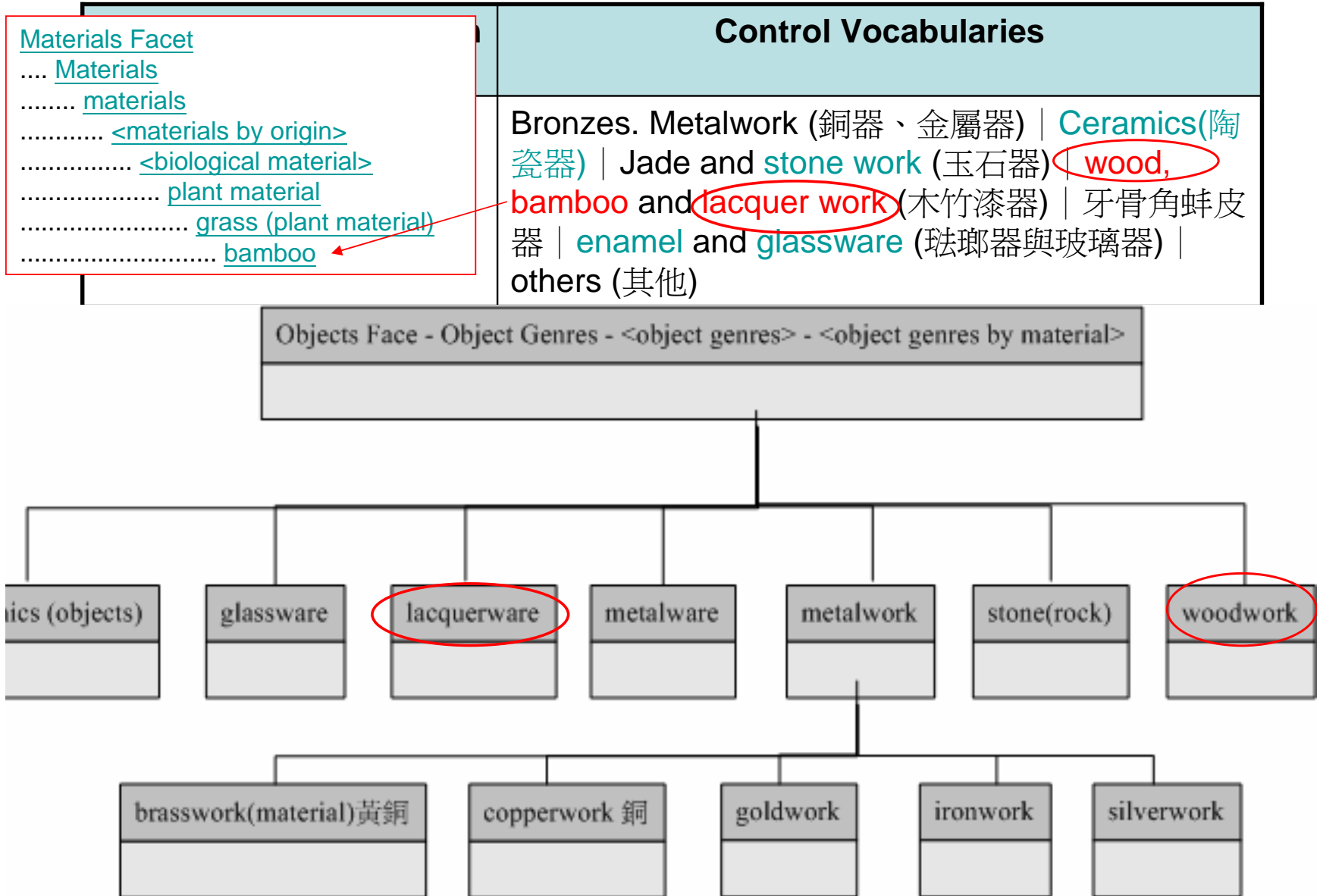
Object Genres

National Palace Museum Metadata	Control Vocabularies
Media (類別)	Bronzes. Metalwork (銅器、金屬器) Ceramics (陶瓷器) Jade and stone work (玉石器) wood, bamboo and lacquer work (木竹漆器) 牙骨角蚌皮器 enamel and glassware (琺瑯器與玻璃器) others (其他)

Objects Face - Object Genres - <object genres> - <object genres by material>

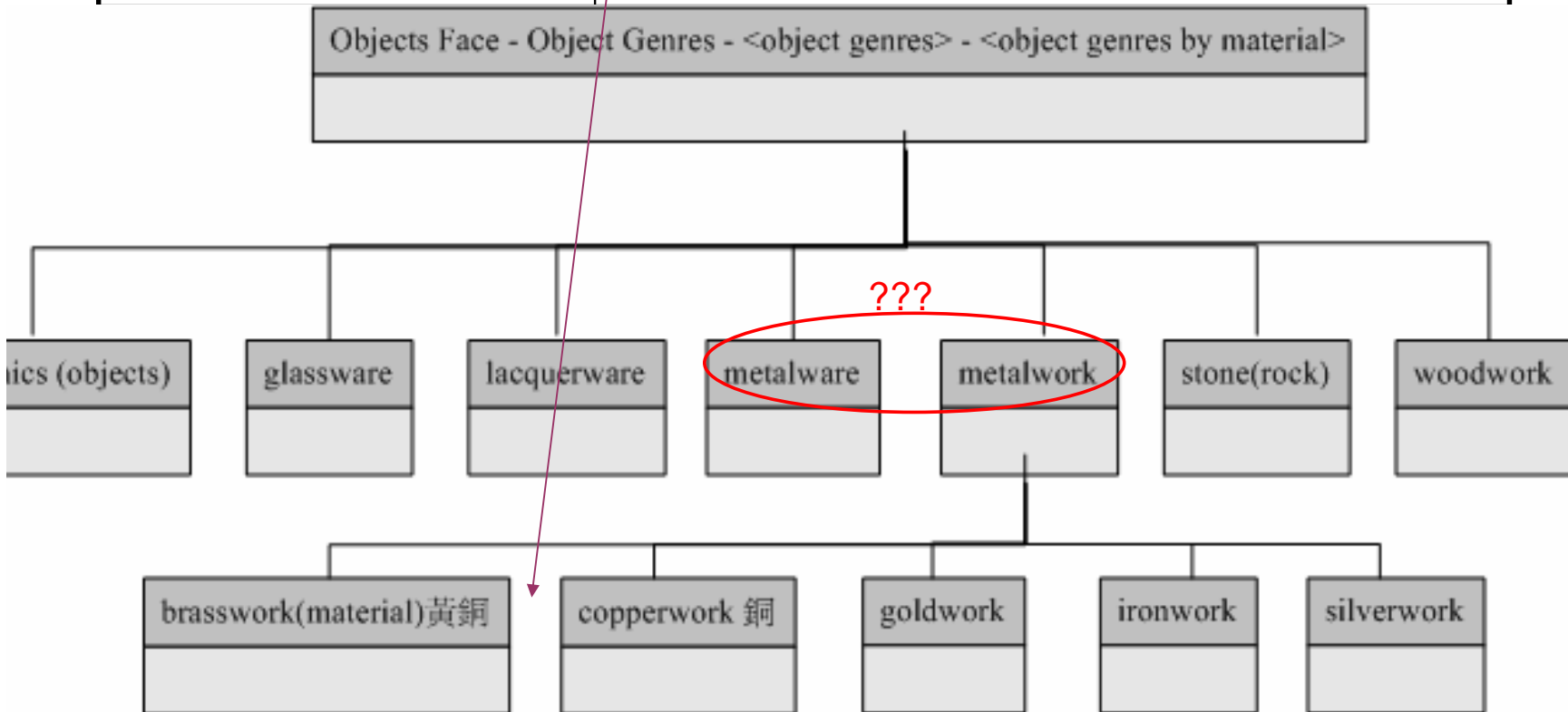


Object Genres



Object Genres

National Palace Museum Metadata	Control Vocabularies
Media (類別)	Bronzes. Metalwork (銅器、金屬器) Ceramics(陶 瓷器) Jade and stone work (玉石器) wood, bamboo and lacquer work (木竹漆器) tooth, bone, horn, clam, leather work (牙骨角蚌皮器) enamel and glassware (琺瑯器與玻璃器) others (其他)



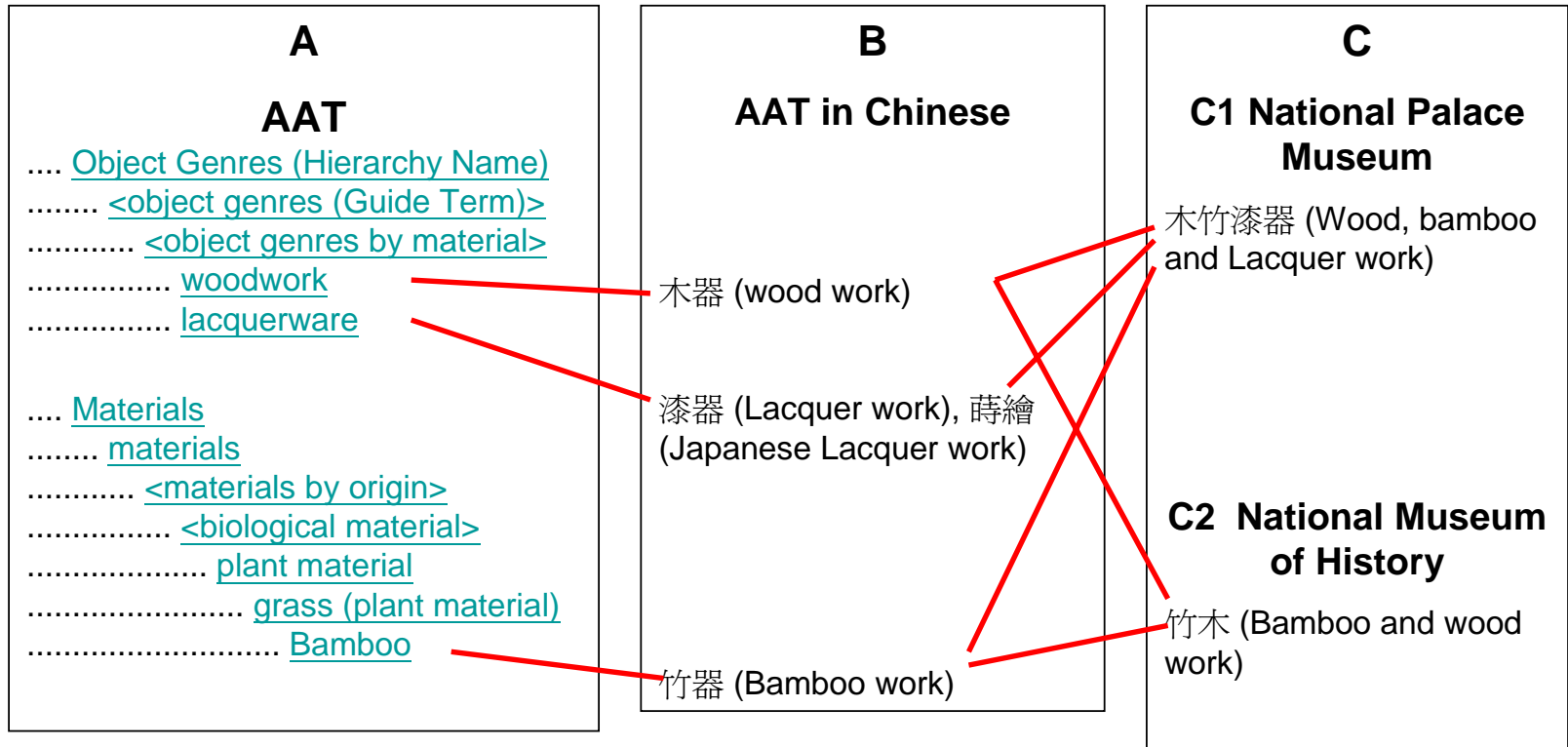
Object Genres

- [Objects Facet](#)
- [Object Genres \(Hierarchy Name\)](#)
- [<object genres \(Guide Term\)>](#)
- [<object genres by material>](#)
- [beadwork](#)
- [bidriware](#)
- [calabashes](#)
- [canework](#)
- [fitching](#)
- **[ceramics \(objects\)](#)**
- [pottery \(object genre\)](#)
- [studio ceramics](#)
- [whiteware](#)
- [chalkware](#)
- [concretework](#)
- [faience \(ancient objects\)](#)
- **[featherwork](#)**
- [feltwork](#)
- [fiberwork](#)
- [bastwork](#)
- [gems \(object genres\)](#)
- **[glassware](#)**
- [Anglo-Irish glass](#)
- [art glass](#)
- **[lacquerware](#)**
- [bantam work](#)
- [Coromandel lacquer](#)
- [urushi \[N\]](#)

- [metalware](#)
- **[metalwork](#)**
- [brasswork \(material\)](#)
- **[copperwork](#)**
- [cut steel](#)
- [goldwork](#)
- [ironwork \(metalwork\)](#)
- [leadwork](#)
- [plate \(object genre\)](#)
- [silverwork](#)
- [steelwork](#)
- [wirework](#)
- [mummies](#)
- [paperwork \(crafts\)](#)
- **[cut-paper work](#)**
- [origami \[N\]](#)
- [scrapbooking](#)
- [parfleches](#)
- [plasterwork](#)
- [pargeting](#)
- [quillwork](#)
- [raffiawork](#)
- [ribbonwork](#)
- [ropework \(object genre\)](#)
- [rushwork](#)
- [shellwork](#)
- [silverware](#)
- [hollowware \[N\]](#)
- **[stone \(rock\) \[N\]](#)**
- [<stone by form>](#)
- [<stone by function>](#)
- [<stone by quality>](#)
- [straw work](#)
- **[textiles](#)**
- [arpilleras](#)
- [<culinary equipment: textiles> \[N\]](#)
- [druggets \[N\]](#)
- [kangas \(textile\)](#)
- [linens \(object genre\)](#)
- [samplers \(embroidered\)](#)
- [tapestries \[N\]](#)
- [tinware](#)
- [wickerwork](#)
- **[woodwork](#)**
- [joinery \(object genre\)](#)
- [Mauchline ware](#)

木竹漆器

(Wood Work/Bamboo Work/Lacquer Ware)



Step1 A-B: translation

Step2 B-C: mapping/linking

Step3 B: Preferred/Non-Preferred Term

(to accommodate both the expert and the general user)

A-AAT

.... Object Genres (Hierarchy Name)

..... <object genres (Guide Term)>

..... <object genres by material>

..... woodwork (總稱)木製品

Note: Interior fittings of wood, such as moldings and staircases; also work done in or with wooden objects or parts made of wood.

.... Object Genres (Hierarchy Name)

..... <object genres (Guide Term)>

..... <object genres by material>

..... lacquerware 漆器

Note: Objects, usually made of thin wood, which are coated and decorated with layers of lacquer, often accompanied by inlays of other substances such as mother-of-pearl and metal.

.... Materials

..... materials

..... <materials by origin>

..... <biological material>

..... plant material

..... grass (plant material)

..... bamboo 竹

Note: Any of the woody or treelike tropical and semitropical grasses of the genera Bambusa, Phyllosyachys, Dendrocalamus, and allied genera, having woody, hollow stems and stalked blades and flowering only after years of growth. The stalk is used as a building material and for making furniture.

C- Fill-in Lacquer Box with Peony (1368 A.D.-1644 A.D)



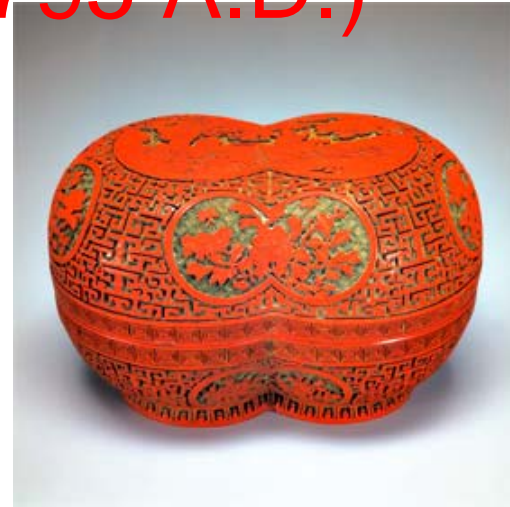
Title: Fill-in Lacquer Box with Peony(品名: 明 填漆牡丹圓盒) (1368 A.D.-1644 A.D)

Media: wood, bamboo, and lacquer work (類別: 木竹漆器)

Material: lacquer (材質: 漆)

Institution: National Palace Museum (單位: 故宮)

C- Carved Red Lacquer Box (1736 A.D.-1795 A.D.)



Title: Carved Red Lacquer Box (品名:清 乾隆 剔紅雙緣寶盒)(1736 -1795A.D.)

Media: wood, bamboo,and lacquer work (類別:木竹漆器)

Material: **lacquer** (材質:漆)

Institution: National Palace Museum (單位:故宮)

C- Carved Bamboo Brush Holder (1644 -1911A.D.)

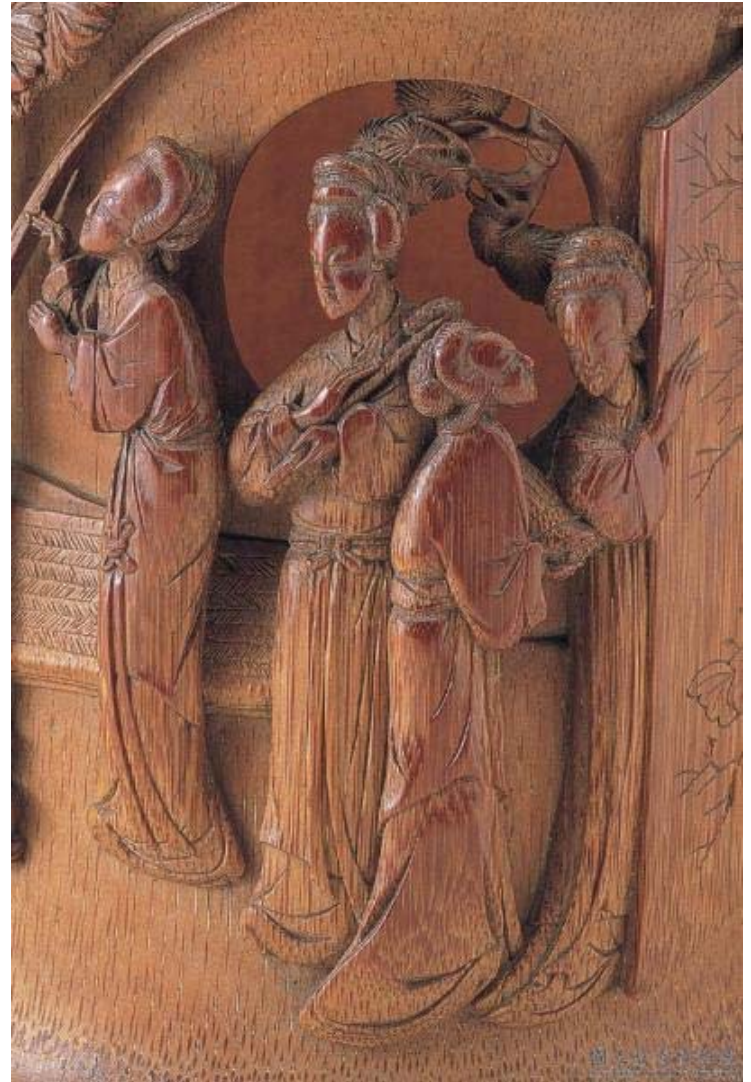


Title: Carved Bamboo Brush Holder
(品名:清「三松」款雕竹仕女筆筒)(1644 -1911A.D.)

Media: wood, bamboo, and lacquer work
(類別:木竹漆器)

Material: bamboo (材質:竹)

Institution: National Palace Museum
(單位:故宮)



Object Genres

National Palace Museum Metadata		Control Vocabularies
Media (類別)		Bronzes. Metalwork (銅器、金屬器) Ceramics(陶瓷器) Jade and stone work (玉石器) wood, bamboo and lacquer work (木竹漆器) tooth, bone, horn, clam, leather work (牙骨角蚌皮器) enamel and glassware (琺瑯器與玻璃器) others (其他)
Formal Description (形式描述)	Description Type (描述類別)	Material (質材) ware (胎質) glaze (釉色) hardness (硬度) color (色澤) 成份 全器形制 局部形制 製作痕跡 使用痕跡與遺存
	Description Code (代碼)	依「描述類別」代碼表有所不同，詳見【註一】。

Material 三維選單		
Animal (動物)	Shell (貝)	砵磔 蚌殼
	Tooth (牙)	Ivory (象牙) 野豬牙
	甲	玳瑁
	Bone (骨)	染骨
	Horn (角)	Rhinoceros Horn (犀角) 牛角 鹿角
	Leather (皮)	
	毛	貂皮
	Feather (羽)	
plants (植物)	Wood (木)	沉香木 伽楠木 紫檀木
	Bamboo (竹)	
	Lacquer (漆)	
	Fruit (果實)	葫蘆 椰殼 椰子
	Pit (果核)	Oliver pit 橄欖核 peach pit 桃核
	Paper (紙)	粉紙 臘箋紙 藏經紙
	香	
	Ink (墨)	
Mineral (礦物)	Metal (金屬)	金 銀 銅 青銅 黃銅
	Gem (玉石珠寶)	輝石玉 角閃玉 玉石 石(雞血) 礦綠石 楚石 英 水晶 紫晶 茶晶 米珠 白米珠 珊瑚 琥珀 雀石 尖晶石 石榴子石
	Ceramics (陶瓷)	
	Glass (玻璃)	單色玻璃 套色玻璃 金



3.4x1.4x1.6cm



Title: Carved Boat

(品名:清 陳祖章 果核小舟)(1737A.D.)

Media: wood, bamboo, and lacquer work (類別:木竹漆器)

Material: Pit (材質:果核)

Institution: National Palace Museum

(單位:故宮)

Object Genres

National Palace Museum Metadata		Control Vocabularies
Media (類別)		Bronzes. Metalwork (銅器、金屬器) Ceramics(陶瓷器) Jade and stone work (玉石器) wood, bamboo and lacquer work (木竹漆器) tooth, bone, horn, clam, leather work (牙骨角蚌皮器) enamel and glassware (琺瑯器與玻璃器) others (其他)
Formal Description (形式描述)	Description Type (描述類別)	Material (質材) ware (胎質) glaze (釉色) hardness (硬度) color (色澤) 成份 全器形制 局部形制 製作痕跡 使用痕跡與遺存
	Description Code (代碼)	依「描述類別」代碼表有所不同，詳見【註一】。

Ware (胎質)

Metal (金屬) | Gold (金) | Silver (銀) | Copper (銅) | Iron (鐵) | 合金 | 其他金屬胎 | Wood (木) | Bamboo (竹) | Glass (玻璃) | Ceramics (陶瓷) | 夾紵 | 胎質不詳

Glaze (釉色)

Singleglaze (單色釉) | 青釉 | White Glaze (白釉) | 透明釉 | 紫金釉 | 黑(烏金)釉 | 銅紅釉 | 鈎釉 | 爐鈎釉 | 汝釉 | 官釉 | 哥釉 | Yellow Glaze (黃釉) | 霽青釉 | 孔雀藍 | 湖綠, 松石釉 | 仿銅 | 仿漆 | 仿竹 | 仿木 | 仿瑤瑯 | 青瓷鐵斑 | 青瓷銅斑 | Green Glaze (綠釉) | 紫釉 | Red Glaze (紅釉) | Blue Glaze (藍釉) | 茶葉末 | 其他單色釉

Underglaze (釉下彩繪) | Underglaze Blue (青花) | 褐彩 | Underglaze Red (釉裡紅) | 青花釉裡紅 | 釉下三彩 | 護胎汁 | 墨彩 | 青花加彩 | 其他釉下彩繪

彩瓷 | Tou-Ts'ai (鬥彩) | Wuc'ai or Wu-Ts'ai (五彩) | Fen-Ts'ai (粉彩) | 唐三彩 | 描紅 | 描金 | 描銀 | 黃綠彩 | 綠彩 | 黃彩 | 紅黃彩 | 綠褐彩 | 霽青白花 | 法花 | 花釉 | 黃紫彩 | 素三彩 | 紅料 | 藍料 | 夾彩 | 其他彩瓷

瑤瑯彩 | 紅地瑤瑯彩 | 藍地瑤瑯彩 | 紫地瑤瑯彩 | 黃地瑤瑯彩 | 粉紅地瑤瑯彩 | 白地瑤瑯彩 | 洋紅地瑤瑯彩 | 綠地瑤瑯彩 | 黑地瑤瑯彩 | 粉青地瑤瑯彩 | 赭墨 | 金地瑤瑯彩 | 其他瑤瑯彩

彩繪陶

彩陶

其他釉色

The Discussion: Object Genres

- TELDAP Elements: Type, Materials, Function
 - Integrate into Union Catalogue (UC): Type by materials, Type by functions
- Controlled vocabularies from the collection projects of the TELDAP need to be reconstructed, and to build link between AAT in Chinese and Collection Projects (eg. NPM) and build a rule of thumb.
- Controlled vocabularies from the TELDAP can be too in depth, so when mapping in the AAT, it may not match the equivalent terms. For example, relationship between Broader term (AAT) and Narrower term (TELDAP).
 - Partial equivalence
- TELDAP presents *Object Genres by functions*, these functions need to be carefully analyzed to extract the function part since these genres are composed of compound terms (function + object)

Preliminary Study

- STYLES AND PERIODS FACET
 - Styles and Periods

Chinese Painting Styles (AAT)

- [Styles and Periods Facet](#)
- [Styles and Periods](#)
- [<styles and periods by region>](#)
- [Asian](#) 亞洲
- [East Asian](#) 東亞
- [Chinese](#) 中國
- [<Chinese styles and periods>](#) 中國風格和時期
- [<Chinese styles \(guide term\)>](#) 中國風格
- [<Chinese painting styles>](#) 中國繪畫風格
- [Bai miao](#) 白描
- [blue-and-green \(Chinese painting style\)](#) 青綠山水
- [Canton \(Chinese painting style\)](#) 廣東畫派
- [Dong-Ju](#) 董巨風格
- [Individualist](#) 獨創主義者
- [Loudong](#) 婁東畫派
- [Ma-Xia](#) 馬夏風格
- [Northern School](#) 北宗畫(北畫)
- [Shanghai school](#) 上海畫派
- [Southern School \(Chinese style\)](#) 南宗畫(南畫)
- [Su-Song](#) 蘇松畫派
- [Wen ren](#) 文人畫
- [Ink-bamboo](#) 墨竹
- [Wu \(painting style\)](#) 吳派
- [Zhe](#) 浙派

Chinese painting styles **by** **technique** : Lotus / Dai-chien Chang

◎沒骨荷/張大千

◎ Techniques : Boneless
(技法: 沒骨)

◎ Subject: Bird and
Flower Paintings
(主題: 花鳥畫)

◎ Styles: Sketching-ideas
(風格: 寫意)

◎ Color: Color Paintngs
(色彩: 設色)

◎ Repository: National
Museum of History
(典藏單位: 國立歷史博物館)



Source: <http://catalog.ndap.org.tw/?URN=1368010>

Lotus in Monochrome Ink / Chang Dai-chien

◎墨荷(1911~) /張大千

◎ **Techniques : Boneless**
(技法: 沒骨)

◎ **Styles: Sketching-ideas**
(風格: 寫意)

◎ **Repository: National Museum of History**
(典藏單位: 國立歷史博物館)

Source: <http://catalog.ndap.org.tw/?URN=1367883>



Flower and Bird Painting (1944) / Shu-Ci Zhang

◎離緒依依 (1944) /張書旂

◎Techniques : Boneless
(技法: 沒骨)

◎ Subject: Bird and
Flower Paintings
(主題: 花鳥畫)

◎ Color: Color Paintings
(色彩: 設色)

◎ Repository: Hwa Kang
Museum
(典藏單位: 華岡博物館)



Source: <http://catalog.ndap.org.tw/?URN=1159321>

Chinese painting styles **by technique**

Album of Flower and Bird Paintings by celebrities in Song and Yuan Dynasties

◎宋元名人花鳥合璧 冊
宋黃居寀芍藥

◎ **Processes or Techniques Name: Gonbi**
(技法: 工筆)

◎ **Subject: Bird and Flower Paintings**
(主題: 花鳥畫)

◎ **Repository: National Palace Museum**
(典藏單位: 國立故宮博物院)



Source: <http://catalog.ndap.org.tw/?URN=2200991>
http://ndweb.iis.sinica.edu.tw/pes/Include/GetImage.jsp?file_id=447621&type=2&width=800&height=600

Chinese painting styles **by technique**

宋梁楷潑墨仙人(1201-1204 AD)

技法：寫意

© Techniques: **Splashed Ink, Sketching-ideas**
(技法: 潑墨、寫意)



本幅潑墨仙人，除頭部外形及五官用細線描繪，通體以淋漓的水墨抒寫，使仙人爛醉如泥，醉眼矇矓的特徵格外突出。

<http://catalog.digitalarchives.tw/dacs5/System/Exhibition/Detail.jsp>

http://www.jetprint.com.tw/eshop_t07.htm

Chinese painting styles **by technique**

潑墨 (splashed ink)

夏山雲瀑(1970) /張大千



◎ **Techniques: Splashed Ink, Sketching-ideas**

(技法: 潑墨、寫意)

◎ **Subject: Landscapes**

(主題: 山水畫)

◎ **Repository: National Museum of History**

(典藏單位: 國立歷史博物館)

<http://catalog.digitalarchives.tw/dacs5/System/Exhibition/Detail.jsp>

<http://ndweb.iis.sinica.edu.tw/pes/System/galleryC.jsp?id=539453&searchkeyword=&ShowPage=28&p=2&dir=implement#>

A lady (1964) /Hou-Si Zeng

◎仕女(1964) /曾后希

◎ **Processes or
Techniques Name: Gonbi**
(技法: 工筆)

◎ **Subject: Figure
Paintings**
(主題: 人物畫)

◎ **Color: Color Paintngs**
(色彩: 設色)

◎ **Repository: Hwa Kang
Museum**
(典藏單位: 華岡博物館)



Source: <http://catalog.ndap.org.tw/?URN=1368474>

Zhong Kui (1994) /Syue-Yuan Chen



◎ 鍾馗(1994) /陳學元

◎ **Techniques: Sketching-ideas**(技法: 寫意)

◎ **Subject: Figure Paintings**
(主題: 人物畫)

◎ **Color: Color Paintngs**
(色彩: 設色)

◎ **Repository: Hwa Kang Museum**
(典藏單位: 華岡博物館)

Source: <http://catalog.ndap.org.tw/?URN=1159467>

On the Lake (1971) / Duo-Cih Swun



©湖上(1971) / 孫多慈

© **Style: Mi Style**
(風格: 米家山水)

© Repository: Hwa Kang
Museum
(典藏單位: 華岡博物館)

Source: <http://catalog.ndap.org.tw/?URN=431123>

Two Macaques (1986) / Au Ho



◎ 雙猿(1986) / 歐豪年

◎ Techniques: **Sketching-ideas**(技法: 寫意)

◎ Style: **Lingnan School**
(風格: 嶺南畫派)

◎ Color: Color Paintngs
(色彩: 設色)

◎ Repository: Hwa Kang
Museum
(典藏單位: 華岡博物館)

Source: <http://catalog.ndap.org.tw/?URN=1159610>

Two Rabbits(1994) /Au Ho



◎ 雙兔(1994) /歐豪年

◎ Techniques: **Sketching-ideas**(技法: 寫意)

◎ Style: **Lingnan School**
(風格: 嶺南畫派)

◎ Color: **Color Paintngs**
(色彩: 設色)

◎ Repository: **Hwa Kang Museum**
(典藏單位: 華岡博物館)

Source: <http://catalog.ndap.org.tw/?URN=1159629>

Along the River During the Qingming Festival (Qing Academy version (1936))



◎清院本清明上河圖 卷)

◎ Subject: **Genre paintings**

(主題: 風俗畫)

◎ Repository: National Palace Museum

(典藏單位: 國立故宮博物院)

Source: <http://catalog.ndap.org.tw/?URN=1085299>
<http://woixv.com/index/photos/2006/09/desktop/cex1.jpg>

Yellow Crane Pavilion Painting in Song Dynasty



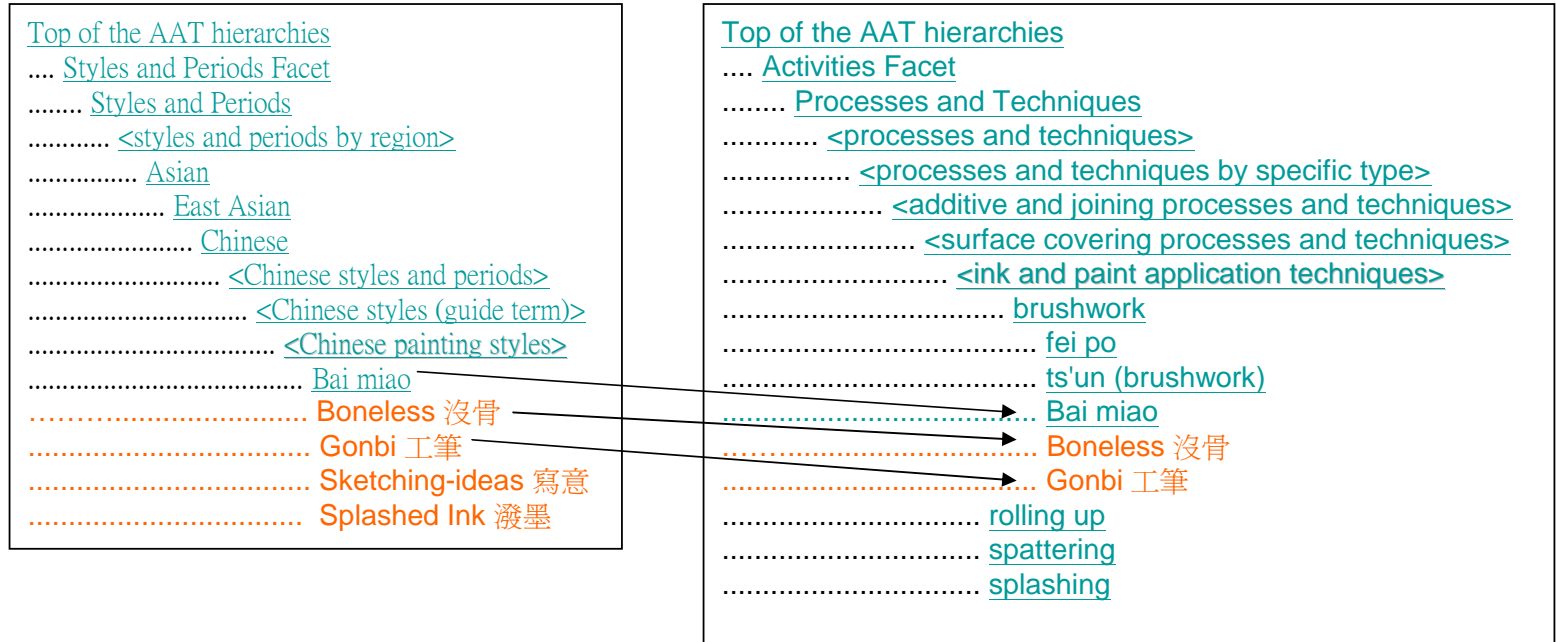
◎宋人黃鶴樓圖 軸

◎ Subject: **Ruled-line Paintings**
(主題: 界畫)

◎ Repository: National Palace Museum
(典藏單位: 國立故宮博物院)

Source: <http://catalog.ndap.org.tw/?URN=260994>

Terms under <Chinese painting styles> and <ink and paint application technique>



Note: For some technique terms of Chinese paintings, they may appear both under <ink and paint application techniques> and <Chinese painting styles> if the **technique is applied in the whole or most area of a painting** and it has also been **considered a type of style**.

National Palace Museum- Painting Techniques Controlled Vocabularies

Metadata	1 st	2 nd
Techniques (技法)	Bai miao (白描)	
	Gonbi (工筆)	
	Boneless (沒骨)	
	雙鉤	
	無皴	
	ts'un (brushwork) (皴法)	Hemp-fiber Strokes (披麻皴) 、雨點皴、 Axe-cut Strokes (斧劈皴) 、卷雲皴、米點皴、折帶皴、馬牙皴、牛毛皴、荷葉皴、鬼面皴、解索皴
	人物衣紋描法（勻稱線條）	高古遊絲描、琴弦描、鐵線描、曹衣描
	人物衣紋描法（粗細線條）	行雲流水描、馬蝗描、釘頭鼠尾描、混描、折蘆描、柳葉描、竹葉描、戰筆水紋描、枯柴描、蘭葉描
人物衣紋描法（減筆）		



ter

id=277&useHotCount=true

移至 連結

珍藏特展 目錄導覽 技術體驗 部落格 回到首頁 ENGLISH

進階搜尋

輸入關鍵字 搜尋

Hemp-Fiber Strokes

- 披麻皴
- 牛毛皴

1/92

色彩：墨色、技法：寫意、主題意涵：寫景、表現題材：山水

CH 網路

The Discussion: Styles and Periods

- TELDAP Element: technique
- In Chinese painting style, AAT lacks some important concepts since it focuses more on western painting style.
- Suggest <Chinese painting styles> under AAT can add the following guide terms :
 - <Chinese painting styles by technique>
 - <Chinese painting styles by color>
 - <Chinese painting styles by artists>
 - <Chinese painting styles by location>
 - <Chinese painting styles by subject>
- In the next 2 slides, it shows the exact terms under each category.

Chinese Painting Styles (AAT-based)

Suggestions

- [<Chinese painting styles>](#)
- [Individualist](#) 獨創主義者
- [Wen ren](#) 文人畫
- Ch'an Paintings 禪畫
- Academy of Paintings 院派(院體畫/院畫)[1]
- **<Chinese painting styles by technique>**
- [Bai miao](#) 白描
- Boneless Ink Wash 沒骨[2]
- Gonbi 工筆[3]
- Sketching-ideas 寫意[4]
- Splashed Ink 潑墨[5]
- **<Chinese painting styles by color>**
- [blue-and-green \(Chinese painting style\)](#) 青綠山水
- Color Paintings 設色
- **<Chinese painting styles by artists>**
- [Ma-Xia](#) 馬夏派
- [Mi Style](#) 米派[7]
- [Dong-Ju](#) 董巨風格
- [Su-Song](#) 蘇松畫派
- [Zhe](#) 浙派

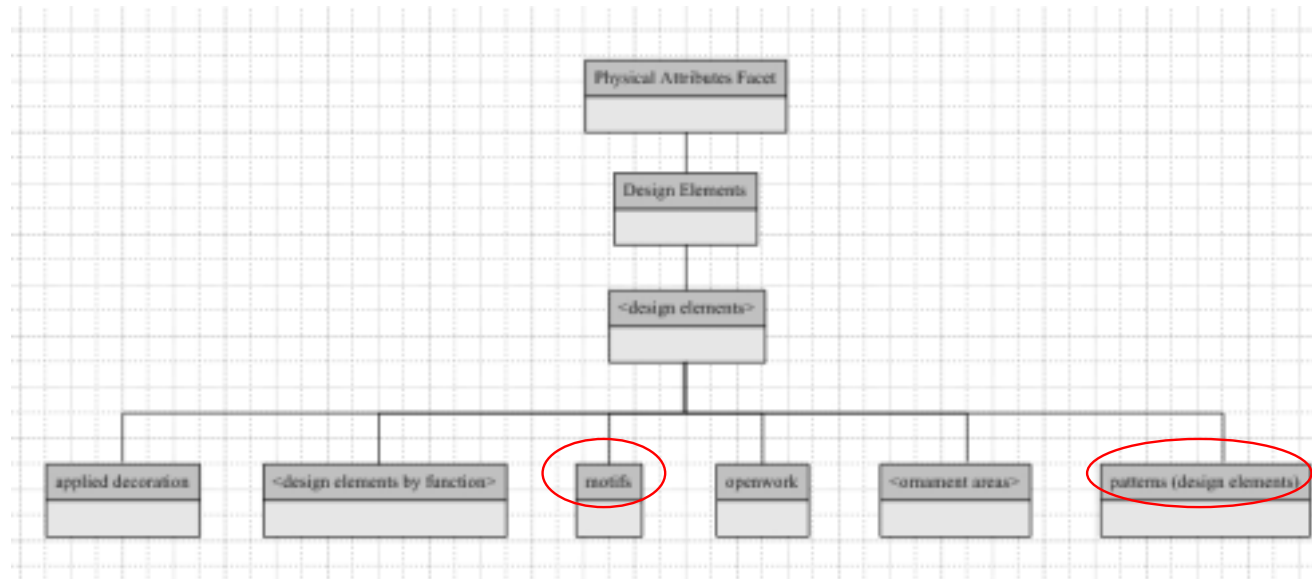
Chinese Painting Styles (AAT-based)

Suggestions

- <Chinese painting styles by location>
- [Northern School](#) 北宗畫(北畫)
- [Southern School \(Chinese style\)](#) 南宗畫(南畫)
- [Shanghai school](#) 海上畫派(海派)
- [Canton \(Chinese painting style\)](#) 廣東畫壇
- [Loudong](#) 婁東畫派
- [Wu \(painting style\)](#) 吳派
- [Lingnan School](#) 嶺南畫派[1]
- <Chinese painting styles by subject>
- [Ink-bamboo](#) 墨竹
- [Bird and Flower Paintings](#) 花鳥畫
- [Genre Paintings](#) 風俗畫[2]
- [Ruled-line Paintings](#) 界畫[3]
-

Preliminary Study

- PHYSICAL ATTRIBUTES FACET
 - Attributed and Properties
 - Conditions and Effects
 - Design Elements (motifs, patterns)
 - Color



Pattern

- [patterns \(design elements\)](#) 圖案(設計元素)
- [<patterns by general type>](#) 依一般類型分類之圖案
- [allover patterns](#) 花紙花布圖案
- [arabesques \[N\]](#) 阿拉伯式花紋;蔓藤花紋
- [hatayi](#) 土耳其陶器上的一種阿拉伯式花紋
- [moresques](#) 一種渦卷飾圖案
- [rumi](#) 一種土耳其傳統的葉子或植物之阿拉伯圖案
- [diaper patterns](#) 花紋
- [grain patterns \[N\]](#) 紋理圖案
- [<book cloth grain patterns>](#) 書布紋理
- [bead grain](#) 珠狀紋理
- [bubble grain](#) 氣泡紋理
- [crackle grain](#) 碎裂花紋紋理
- [diagonal beaded-line](#) 對角的珠狀線
- [diaper grain](#) 菱形紋理
- [dot and line](#) 點和線
- [dotted-line](#) 虛線
- [frond grain](#) 蕨葉紋理
- [honeycomb grain](#) 蜂巢狀紋理
- [morocco grain](#) 摩洛哥羊皮紋理
- [ribbed morocco grain](#) 稜紋摩洛哥羊皮紋理
- [rib grain](#) 稜紋紋理
- [ripple grain](#) 漣漪紋理
- [sand grain](#) 沙紋理
- [wave grain](#) 波浪紋理
- [cross grain](#) 十字形紋理
- [levant grain](#) 一種上方印有凸飾的紋理圖案
- [pebble grain](#) 卵石花紋紋理
- [pig grain](#) 豬皮紋理
- [straight grain](#) 一種平行縐痕的紋理圖案
- [millefleurs \[N\]](#) 萬花斑駁圖案
- [powderwork](#) 一種許多小紋飾散亂之紋飾
- [counterchange](#) 交錯
- [running ornament](#) 連續裝飾
- [rolls \(patterns\)](#) 捲狀(圖案)
- [twisted pineapple \[N\]](#) 一種連續圖案,扭曲的莖葉中間間隔以鳳梨
- [undulate bands](#) 一種主要元素曲線來回連續出現之鑲邊
- [vertebrate bands](#) 一種鑲邊之裝飾
- [<patterns by specific type>](#) 依特定類型分類之圖案
- [arabesques](#) 蔓藤花紋/阿拉伯式圖案
- [hatayi](#) 土耳其陶器上的一種阿拉伯式花紋
- [moresques](#) 摩爾式
- [rumi](#) 一種土耳其傳統的葉子或植物之阿拉伯圖案
- [cloud bands](#) 雲狀鑲邊
- [<edging and surfacing patterns>](#) 邊緣及表面圖案
- [arcading \(edging and surfacing patterns\)](#) 一種模仿拱廊的裝飾圖案(邊緣及表面圖案)
- [arises](#) 稜角線
- [beading \(edging pattern\)](#) 串珠狀飾物(邊緣圖案)
- [dentelle \(pattern\)](#) 一種類似金邊的裝飾(圖案)
- [fluting](#) 凹凸條紋織物
- [cabled fluting](#) 一種凹凸條紋的紋飾
- [strigillation](#) 一種凹凸條紋的紋飾
- [gadrooning](#) 圓模雕刻裝飾
- [imbrication](#) 鱗狀重疊
- [scale pattern](#) 一種像是魚鱗的圖案
- [pointillé](#) 一種通常用在裝訂皮革的圖案
- [reeding](#) 用蘆葦裝飾
- [rustication](#) 粗面光邊石光
- [scalloping](#) 扇貝
- [vermiculation](#) 蠕蟲爬跡形的裝飾
- [filigree](#) 用金銀絲細工飾品裝飾
- [floral patterns](#) 花圖案
- [millefleurs](#) 萬花斑駁圖案
- [foliation \(pattern\)](#) 花葉形裝飾(圖案)

Pattern

- [geometric patterns](#) 幾何圖案
- [checker pattern](#) 棋盤花格圖案
- [diced pattern](#) 骰子圖案
- [houndstooth](#) 碎格子花樣
- [frets \(patterns\)](#) 萬字浮雕,回紋飾(圖案)
- **[Chinese frets](#) 中國式萬字紋**
- [key pattern](#) 鎖飾圖案
- [fretwork](#) 回紋裝飾/浮凸雕工
- **[Chinese fretwork](#) 中國式回紋裝飾/浮凸雕工**
- [herringbone](#) 人字形圖案
- [money pattern](#) 錢幣圖案
- [reticulation](#) 網狀
- [step pattern](#) 梯階圖案
- [stripes](#) 斑紋
- [pinstripes](#) 細條紋
- [tilings \(geometric patterns\)](#) 花磚(幾何圖案)
- [zigzags](#) Z字形
- [Bargello work](#) 巴爾傑洛繡製品
- [grain patterns](#) 紋理圖案
- [<book cloth grain patterns>](#) 書布紋理
- [bead grain](#) 珠狀紋理
- [bubble grain](#) 氣泡紋理
- [crackle grain](#) 碎裂花紋紋理
- [diagonal beaded-line](#) 對角的珠狀線
- [diaper grain](#) 菱形紋理
- [dot and line](#) 點和線
- [dotted-line](#) 虛線
- [frond grain](#) 蕨葉紋理
- [honeycomb grain](#) 蜂巢狀紋理
- [morocco grain](#) 摩洛哥羊皮紋理
- [ribbed morocco grain](#) 稜紋摩洛哥羊皮紋理
- [rib grain](#) 稜紋紋理
- [ripple grain](#) 漣漪紋理
- [sand grain](#) 沙紋理
- [wave grain](#) 波浪紋理
- [cross grain](#) 十字形紋理
- [levant grain](#) 一種上方印有凸飾的紋理圖案
- [pebble grain](#) 卵石花紋紋理
- [pig grain](#) 豬皮紋理
- [straight grain](#) 一種平行縐痕的紋理圖案
- [guilloche](#) 扭索狀裝飾
- [interlace](#) 編織狀
- [knotwork](#) 編結工藝
- [lacertine ornament](#) 有蜥蜴狀花飾的裝飾
- [lace pattern](#) 花邊圖案
- [meanders \(patterns\)](#) 波形飾(圖案)
- [stepped frets](#) 一種斜對的階梯紋飾
- [moiré](#) 雲彩紋
- [<patterns by specific type: bindings>](#) 特定類型的圖案：裝
- [<motifs: books>](#) [N] 紋飾：書籍
- [drawer handles](#) 一種書籍裝訂法
- [Oxford corners](#) 一種書籍裝訂法
- [run-up](#) 一種皮革裝訂書籍的紋飾
- [twisted pineapple](#) 一種連續圖案,扭曲的莖葉中間間隔以
- [rarrk](#) 一種細薄,複雜,平行交錯的紋飾
- [scrollwork](#) 漩渦形裝飾
- **[cloud scrolls](#) 雲卷飾**
- [inhabited scrolls](#) 一種人和動物曲線糾纏的漩渦形裝飾
- [scrolling foliage](#) 一種莖和葉纏繞的連續圖案
- [rinceaux](#) 一種捲曲的莖或葉圖案
- [vine scrolls](#) 藤蔓卷飾
- **[wave scrolls](#) 波浪卷飾**
- [Vitruvian scrolls](#) 維特魯威渦卷飾
- [strapwork](#) 帶狀飾
- [wave pattern](#) 波浪圖案
- [willow pattern](#) 柳樹圖案

Motif

- [motifs](#) 紋飾
- [air traps](#) 氣泡
- [cabochons \(design motifs\)](#) 凸圓形
- [candelabrum \(motifs\)](#) 枝狀燭台(紋飾)
- [chintamani](#) 三個球排成一三角形,下方有二條波浪線之紋飾
- [clasps \(motifs\)](#) 鉤子(紋飾)
- [coquillage](#) 一種像貝殼的紋飾
- [crosses \(motifs\)](#) 十字架(紋飾)
 - [ankhs](#) 古埃及十字架
 - [Celtic crosses \(design motif\)](#) 凱爾特十字架
 - [crosses of Lorraine](#) 洛林十字架
 - [Greek crosses](#) 希臘十字架
 - [Latin crosses](#) 拉丁十字架
 - [Calvary crosses](#) 拉丁十字架放在三個階梯的底座上
 - [Maltese crosses](#) 馬耳他十字架
 - [papal crosses](#) 教皇十字架
 - [patriarchal crosses](#) 牧首十字架
 - [Saint Andrew's crosses](#) 聖安德烈十字架
 - [tau crosses](#) T形十字架
 - [wheel crosses \(four-spoke crosses\)](#) 十字架外面加一圓圈之
- 紋飾
- [drolleries](#) 古怪有趣的圖畫
- **<figure- and animal-derived motifs> 人物和動物主題**
 - [aegricanes](#) 象徵公羊或山羊頭之紋飾
 - [bucrania](#) 象徵牛或牛頭骨之紋飾
 - [eyes \(motifs\)](#) 眼睛(紋飾)
 - [eye of Horus](#) 烏加特之眼
 - [eye of Providence](#) 上帝之眼,又稱爲全視之眼
 - [indexes \(motifs\)](#) 手形指標(紋飾)
 - [khamsa](#) 一種特定形式的手紋中間加上眼睛之紋飾
 - [makara](#) 一種古印度的動物紋飾
 - [mascarons](#) 一種象徵怪異或人或動物的漫畫臉譜之紋飾
 - [espagnolettes](#) 一種女性面具的紋飾,盛行於18世紀法國的
- 裝飾藝術
- [foliate masks](#) 被葉子纏繞的人臉之紋飾
- [putti](#) 愛神邱比特裸像;巴洛克風格的男童天使
- [fillets \(motifs\)](#) 凸起之鑲邊(紋飾)
- **<geometric motifs>** 幾何紋飾
 - [chevrons \(motifs\)](#) 山形袖章(紋飾)
 - [cinquefoils](#) 五葉形之裝飾
 - [dots](#) 小圓點
 - [interlocking circles](#) 連鎖圓圈
 - [lozenges](#) 菱形
 - [mandalas](#) 曼陀羅
 - [multifoils](#) 多葉飾
 - [quatrefoils](#) 四葉飾
 - [trefoils \(geometric motifs\)](#) 三葉草(幾何紋飾)
 - [triquetras](#) 三個弧或環組成的三角形圖飾
- [glories](#) 聖徒或神周圍的光輪
- [grotesques](#) 怪誕的圖樣
- [güls](#) 泛指幾何形式的廣大範圍
- [Memling güls](#) 由鉤形梯狀的多邊形組成的一種幾何形
- [hearts \(motifs\)](#) 心形(紋飾)
 - [flaming hearts](#) 心形加上火焰由中噴出或環繞之紋飾
 - [pierced hearts](#) 有箭穿過之心形
- [heraldic motifs](#) 紋章紋飾
- [crests \(motifs\)](#) 雞冠(紋飾)
- [knots \(motifs\)](#) 結(紋飾)
- [labyrinths](#) 一種羅馬馬賽克圖案
- [linenfold](#) 折巾雕飾
- **<motifs: books>** 紋飾:書籍
 - [drawer handles](#) 一種書籍裝訂法
 - [Oxford corners](#) 一種書籍裝訂法
- **<natural element motifs>** 自然元素紋飾
 - [crescents \(shapes\)](#) 弦月(形)

Motif

- [flames](#) 火焰
- [rising suns](#) 日出
- [snowflakes](#) 雪花
- [stars](#) 星
- [Stars of David](#) 大衛王之星，猶太教的六芒星形
- [sunbursts](#) 陽光四射
- [paterae \(motifs\)](#) 火星(紋飾)
- [<plant-derived motifs>](#) **植物紋飾**
- [acanthus](#) 爵床屬
- [anthemion](#) 一簇四射狀的忍冬草或棕櫚葉圖案(希臘藝術品之花邊)
- [palmettes](#) 狀似棕櫚葉的裝飾
- [ballflowers](#) 球心花飾
- [boteh](#) 一種印度傳統的不對稱花朵圖案
- [crabstock](#) 多瘤多枝節的山楂子樹
- [crockets](#) 歌德式建築的蔓草花紋雕飾
- [festoons \(plant-derived motifs\)](#) **花彩裝飾(植物紋飾)**
- [encarpa](#) 垂花飾
- [fleur-de-lis](#) 鳶尾花
- [fleurons \(motifs\)](#) 花形圖案的裝飾(紋飾)
- [honeysuckle \(motif\)](#) 忍冬屬植物(紋飾)
- [husks \(motifs\)](#) 果實外殼(紋飾)
- [lotus \(motif\)](#) **蓮花(紋飾)**
- [oak leaf](#) 橡木葉
- [padma](#) 印度神像下方的蓮花底座
- [Paisley](#) 佩斯利渦旋紋花呢
- [pineapples](#) 鳳梨
- [twisted pineapple \[N\]](#) 一種連續圖案,扭曲的莖葉中間間隔以鳳梨
- [rosettes \(motifs\)](#) 玫瑰花形物(紋飾)
- [Tudor flowers](#) 都鐸花飾
- [Tudor roses](#) 都鐸玫瑰
- [water leaf \(plant-derived motifs\)](#) 水葉(植物紋飾)
- [Zwiebelmuster](#) 洋蔥花飾
- [quodlibet](#) 一種視幻覺法裝飾
- [scrolls \(motifs\)](#) 卷飾(紋飾)
- [C-scrolls](#) C卷飾
- [drawer handles \[N\]](#) 一種書籍的裝訂裝飾
- [leaf scrolls](#) **葉卷飾 or 卷草紋**
- [S-scrolls](#) S卷飾
- [shields \(motifs\)](#) 盾形(紋飾)
- [shou](#) **“壽”圖案**
- [singerie](#) 猴戲圖
- [Affenkapelle](#) 猴子樂隊
- [tetraskelions](#) 四肢朝外放射狀,同時向同一個方向曲的人像圖
- [swastikas](#) 古代印度宗教的吉祥標誌
- [trifid](#) 分裂成三葉的
- [triskelions](#) 象徵里納克里亞之紋飾
- [trumpet spirals](#) 圓圈內有一分叉螺旋形之紋飾
- [whiplash curves](#) 一種誇張的長而變曲的S形曲綫
- [zodiac symbols](#) 星座符號
- [Aquarius symbols](#) 水瓶座符號
- [Aries symbols](#) 牡羊座符號
- [Cancer symbols](#) 巨蟹座符號
- [Capricorn symbols](#) 摩羯座符號
- [Gemini symbols](#) 雙子座符號
- [Leo symbols](#) 獅子座符號
- [Libra symbols](#) 天秤座符號
- [Pisces symbols](#) 雙魚座符號
- [Sagittarius symbols](#) 射手座符號
- [Scorpio symbols](#) 天蠍座符號
- [Taurus symbols](#) 金牛座符號
- [Virgo symbols](#) 處女座符號

1St	2nd	
動物 Animal	走獸 Beast	鼠 牛 虎 兔 蛇(Snake) 鹿 獾 象、象寶、白象 熊 辟邪 其他走獸
Pattern/ Motif	飛禽 Birds	綬帶鳥 蝠 孔雀 喜鵲 鸞 鸚 燕 鸚鵡八哥 鷓鴣貓頭 翁 羽狀紋 長尾鳥 鳥紋
	昆蟲 Insect	蝴蝶 蟬 蠶 蜻蜓 蜂 蚊
	水族 Aquarium	魚 蝦 蟹 龜 蝌蚪 海龍
	獸面紋 Taotie	狹義獸面紋 獸面銜環紋 獸面 紋
	人面紋 Human Face	神人面紋 小眼面紋
	龍紋 dragon	狹義龍紋 蟠龍 行龍 魚龍 紋 花式龍紋 拐子龍 蛟龍
	鳳紋 Phoenix	夔鳳 鳳 鳳凰 其他鳳紋



Title: Vessel with Dragon decoration

(品名:龍紋壺)

Decoration: Snake (紋飾:器腹有蟠蛇紋)

From: National Palace Museum

1St	2nd	3rd
動物 Animal	走獸 Beast	鼠 牛 虎 兔 蛇(Snake) 馬 羊 猴 雞 狗 豬 獅 驢 犀 鹿 獾 象、象寶、白象 熊 豹 貓 松鼠 鴨 蛙 異獸 麒麟 辟邪 其他走獸
	飛禽 Birds	鷺鷥(Aigrette) 蝠 孔雀 喜鵲 鸚鵡 鶴 鷹 鸕鶿 鴛鴦(Mandarin duck) 雁 鳧 貓頭鷹 鳳 麻雀 雉雞 畫紋 長尾鳥 鳥紋 其他鳥類
	昆蟲 Insect	蝴蝶 蟬 蠶 蜻蜓 蜂 蚱 昆蟲
	水族	魚 蝦 蟹 龜 蝌蚪 海(水)
	獸面紋	狹義獸面紋 獸面銜環紋 獸紋 其他獸面紋
	人面紋	神人面紋 小眼面紋
	龍紋	狹義龍紋 蟠龍 行龍 魚龍 曲 兩尾龍紋 花式龍紋 拏對龍 虯紋 其他龍紋
	鳳紋	夔鳳 鳳 鳳凰 其他鳳紋



Title: Wucai Dish with Mandarin Ducks
 (品名:明成化窯 五彩蓮塘鴛鴦盤)(1465-1487AD)
 Decoration: Mandarin Duck
 (紋飾:上下各繪一飛翔鴛鴦)
 From:National Palace Museum

Painted enamel Water Container decorated with Lotus (1644 A.D.-1911 A.D.)



Title: Painted enamel Water Container decorated with Lotus (品名:清 畫琺瑯荷花水盛)(1644-1911AD)

Decoration: Lotus, Aigrette (紋飾:湖藍色透明釉繪飾紅、白荷花及一對鷺鷥，釉色典雅潔淨，增添書房的文藝氣息)

Dimension:4.6x4.7 cm (尺寸:高4.6公分 腹徑4.7公分)

From: National Palace Museum

1St	2nd	3rd
動物 Animal	走獸 Beast	鼠 牛 虎 兔 蛇(Snake) 馬 羊 猴 雞 狗 豬 獅 驢 犀 鹿 獾 象、象寶、白象 熊 豹 貓 松鼠 鴨 蛙 異獸 麒麟 辟邪 其他走獸
	飛禽 Birds	綬帶鳥 蝠 孔雀 喜鵲 鸚鵡 鶴 鷹 鷓鴣 鴛鴦 (Mandarin duck) 雁 亮鵝 黃鸝 燕 鸚鵡八哥 鷓鴣貓 頭鷹 鳳 麻雀 雉雞 畫眉 鷓鴣 白頭翁 羽狀紋 尾鳥 鳥紋 其他鳥類
	昆蟲 Insect	蝴蝶 蟬(cicada) 蠶(silkworm) 螳螂 蜘蛛 其他昆蟲

Title: Jade Cha-tous Planter (品名:清玉渣斗)(1644-1911AD)

Decoration: Cicada (紋飾:頸部琢蟬紋)

From: National Palace Museum



關閉此視窗



請拉動白色方框，即可看到放大的局部。

1St	2nd	3rd
動物 Animal	水族 Aquarium	魚(fish) 蝦(shrimp) 蟹(crab) 龜(turtle) 蝌蚪 海(水)怪 海獸 其他水族
	獸面紋	狹義獸面紋 獸面銜環紋 獸首紋 簡化獸面 雙身獸面紋 其他獸面紋
		龍 翼龍 螭 夔 蟠虺 竊拐子龍 蛟龍 團雲龍 海龍



Title: Jade Ornament with Turtle Decoration

(品名:西周龜殼形玉珮)(ca. 1050-771 BCE)

Decoration: Turtle (紋飾:背殼雕龜殼紋)

From: National Palace Museum

Underglaze Blue Vase

Title: Underglaze Blue Vase (品名:白地青花四海來朝瓶)

Decoration:紋飾:滿繪波濤(wave)、魚(fish)、龜(turtle)、螺(spiral shell)、蝦(shrimp)、蟹圖紋(crab)，並以錐花方式刻劃雲紋，雲紋(cloud)不加描青線。波濤及海生動物，象徵「四海來朝」的吉祥寓意。

From: National Palace Museum



The Most Frequently Appear Decoration on Bronze during 1600BCR-256BCE

商周時期最常出現的青銅器紋飾



Phoenix
鳳鳥紋



Animal Mask or
Taotie
獸面紋



Dragon
龍紋

SEARCH

Bronze Decoration Database

Total: 7181 Records

先秦銅器紋飾資料檢索

規範研擬：故宮器物數位典藏子計畫、青銅器影像資料庫及應用網路計畫
(中央研究院歷史語言研究所、台灣大學藝術史研究所)

資料提供：1.青銅器影像資料庫及應用網路計畫 (6146筆)
2.故宮器物數位典藏子計畫 (809筆紋飾資料)
3.國立歷史博物館數位典藏國家型科技計畫 (226筆)

系統開發：中央研究院資訊科學研究所

網頁製作：故宮器物數位典藏子計畫
更新日期：民國92年1月31日

使用者名稱 密碼

進入系統

申請密碼

SEARCH

先秦銅器紋飾資料檢索

資料檢索 **search**

Name of Decoration	紋飾名稱	<input type="text"/>
Location	位 置	<input type="text"/>
Primary or not	主要紋飾	<input type="checkbox"/> YES <input type="checkbox"/> NO
Title	品 名	<input type="text"/>
No. of Bronze	銅器編號	<input type="text"/>
Date	時 代	<input type="text"/>
Excavation Place	出土地點	<input type="text"/>
Repository	典藏單位	<input type="text"/>
Source	資料來源	<input type="text"/>

每頁顯示 筆資料

先秦銅器紋飾資料檢索

檢索結果

檢索條件：紋飾名稱:鳳鳥紋

全部資料共5835筆，共檢索到61筆符合檢索條件

每頁10筆資料，目前在第1/7頁

已點選 筆資料

序號	紋飾名稱	位置	品名	銅器編號	時代	出土地點	典藏單位
<input type="checkbox"/> 1	鳳鳥紋	足部	豕父丁鼎	01600	西周早期		上海博物館藏
<input type="checkbox"/> 2	鳳鳥紋	口沿下	成王方鼎	01734	西周早期		美國納爾遜美術館藏
<input type="checkbox"/> 3	鳳鳥紋	腹部	冉土 鼎	02739	西周早期	1924年傳陝西鳳翔出土	美國舊金山亞洲藝術博物館藏
<input type="checkbox"/> 4	鳳鳥紋	足部	冉土 鼎	02739	西周早期	1924年傳陝西鳳翔出土	美國舊金山亞洲藝術博物館藏
<input type="checkbox"/> 5	鳳鳥紋	口沿下	言 姜簋	03951	西周早期 (昭王)	1981年陝西長安花園村西周墓出土	陝西歷史博物館藏
<input type="checkbox"/> 6	鳳鳥紋	腹部	言 姜簋	03951	西周早期 (昭王)	1981年陝西長安花園村西周墓出土	陝西歷史博物館藏
<input type="checkbox"/> 7	鳳鳥紋	方禁	言 姜簋	03951	西周早期 (昭王)	1981年陝西長安花園村西周墓出土	陝西歷史博物館藏
<input type="checkbox"/> 8	鳳鳥紋	耳部	言 姜簋	03951	西周早期 (昭王)	1981年陝西長安花園村西周墓出土	陝西歷史博物館藏
<input type="checkbox"/> 9	鳳鳥紋	器身	孟簋	04163	西周中期 (穆王)	1961年陝西長安張家坡西周窖藏出土	陝西歷史博物館藏
<input type="checkbox"/> 10	鳳鳥紋	方禁	孟簋	04163	西周中期 (穆王)	1961年陝西長安張家坡西周窖藏出土	陝西歷史博物館藏

先秦銅器紋飾資料檢索

預覽畫面

總共選擇資料 3筆，共計1頁

您要選擇的服務是：

- 列印銅器
- 列印紋飾
- 列印
- 下載
- 重新點選

編號	紋飾名稱	位置	品名	銅器編號	時代	出土地點	典藏單位
	花冠垂尾鳳鳥紋	腹部	仲子己?其弓?? 觥	09298	西周早期		美國舊金山亞洲藝術博物館藏
	鳳鳥紋	腹部	鳳鳥紋爵	F0641	西周早期		故宮博物館藏
	鳳鳥紋	腹部	鳳鳥紋爵	F0641	西周早期		故宮博物館藏

共 1 頁之第 1 頁

- 回上一層
- 重新檢索

先秦銅器紋飾資料檢索

◆ 紋飾

紋飾名稱：花冠垂尾鳳鳥紋

主要名稱：動物紋-鳥紋
類-鳳鳥紋

位 置：腹部

順 序：3

主要紋飾：是



全圖

顯示/隱藏銅器資料

回上一層

重新檢索

列印



SEARCH

先秦銅器紋飾資料檢索

◆ 紋飾

紋飾名稱： 鳳鳥紋

主要名稱： 動物紋-鳥紋
類-長尾鳥紋

位 置： 腹部

順 序： 3

主要紋飾： 否



全圖

顯示/隱藏銅器資料

回上一層

重新檢索

列印



Animal-Animal Mask (Taotie)

One of the great mysteries of ancient China is the origin and meaning of the **terrifying animal faces on Shang ritual vessels**. These faces look down on us from the distance of 3,000 years but are just as awe and terror-inspiring as they were during the bloody sacrifices of the Shang. Although the pattern occurs on virtually all bronze vessels, almost nothing is known today about them, except their name: taotie. A later source reveals that the taotie is man-eating beast that harms people. Taotie can easily be identified by **a pair of large eyes** with raised pupils at the outer corners.



Dagger with Animal Mask Decoration (1299-1000 B.C.)



Title: Dagger with Animal Mask Decoration
(品名:商後期 鑲嵌松綠石獸面紋匕) (1299-1000 B.C.)

Decoration: Animal Mask (Taotie)
(紋飾:獸面紋)

Form: National Palace Museum

Vessel (1049 B.C.-950 B.C.)



Title: Vessel (西周早期 召卣)
(1049 B.C.-950 B.C.)
Decoration: Animal Mask, Dragon
(通體飾雷紋地之獸面紋與夔紋，腹後前各飾獸首一，有四稜，提梁上飾鹿首犧首各二，並飾夔紋。)
From: National Palace Museum

Jade Dish with Dragon Decoration (901 A.D.-1200 A.D.)



玉質呈草綠色，器緣有褐黃斑塊。圓盤正面飾行龍紋，身軀彎曲翻轉，全身覆滿細鱗，足有三趾。間隙填以鏤空卷草紋錦地。器緣則飾一圈回紋。圓盤背面的紋飾如正面，而較簡略。



Title: Jade Dish with Dragon Decoration

(品名:宋、遼 玉龍紋盤) (901 A.D.-1200 A.D.)

Decoration: Dragon, Leaf Scrolls (pattern) (紋飾:龍紋，捲草紋錦地)

From: National Palace Museum

Jade belt ornament with Fish Dragon d'ecor (1368 A.D.-1644 A.D.)



Title: Jade belt ornament with Fish Dragon d'ecor (品名: 明 玉魚龍
花草紋帶飾)(1368 A.D.-1644 A.D.)

Decoration: **Fish Dragon**, **Circus Cloud** (紋飾: 魚龍, 卷雲錦地為襯)

From: National Palace Museum

Plants

1st	2nd	3rd
Plants (植物)	Leaf 草木 (葉)	松 竹 梧桐 靈芝 萬年青 芭蕉 桂 柳 楓 柏 蘆 葦 藻 枯木 卷草 葉紋 plantain-leaf (蕉葉紋) 卷葉紋 草葉 (荳苳) 紋 桃樹 竹葉 椿 荷葉 水藻 花葉紋 草 花紋 秋草 菖蒲 杏葉 唐草 蘭草 棕櫚 其他草木
	Flower (花卉)	蓮塘 番蓮紋 花瓣紋 Lotus petal (蓮瓣紋) 四瓣花紋 寶 相花紋 四季花卉 團花卉 一把蓮 Lotus (蓮 (荷)) 藤蘿, 藤蔓 牡丹, 芍藥 月季, 玫瑰 天竹(小紅果) 牽牛花 chrysanthemum (菊) 茶花 芙蓉 narcissus (水仙) 海棠 玉蘭 百合 桃, 杏 葵花 石竹 雞冠花 Plum (梅) Iced Plum (冰梅) 萱草 蘭 忍冬 刺梅 繡球花 虞美人, 罌 粟 鳶尾 (燕子花) 石斛蘭 轉枝花卉 茉莉 海石榴花 桔 梗 櫻花 六瓣花紋 八瓣花紋 西番花 皮球花 梔子花 秋葵 纏枝花卉 卷枝花卉 折枝花卉 連枝花卉 寫生花 卉 變形蓮 柿花 菊瓣紋 其他花卉

Ku vessel with plantain-leaf and dragon-décor in peacock blue glaze (1651 A.D.-1750 A.D.)

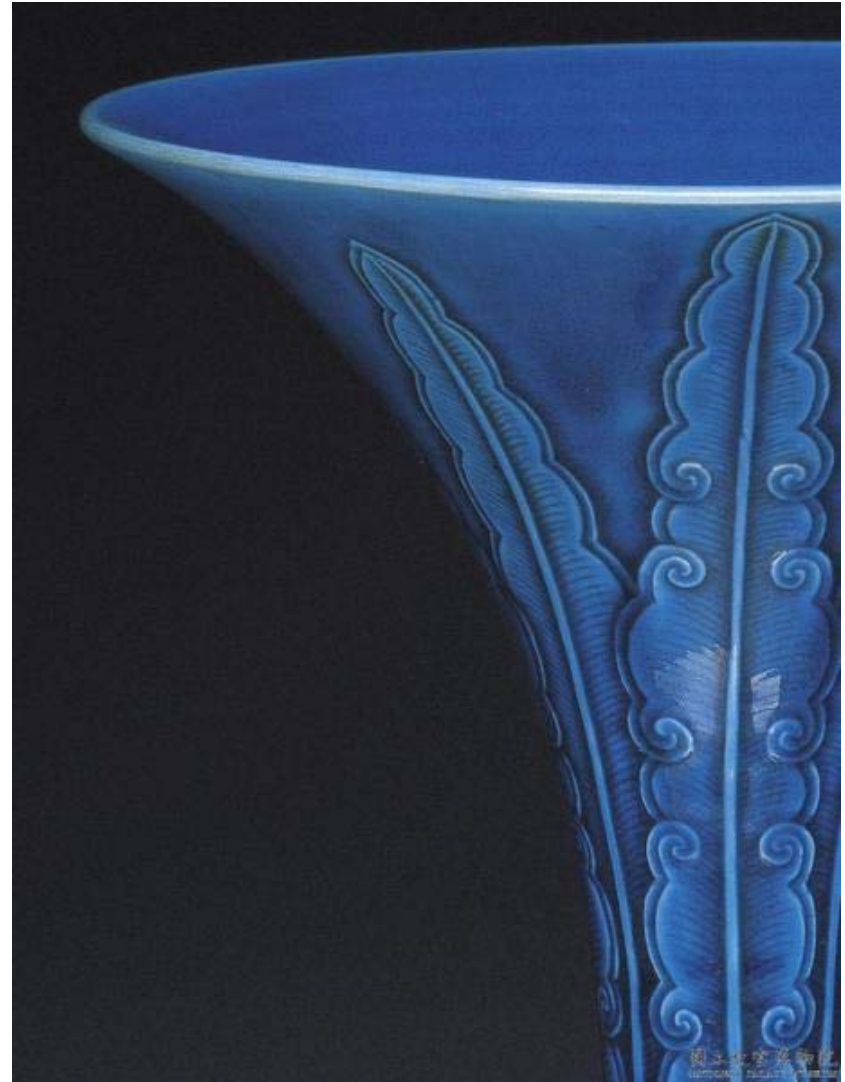
Title: Ku vessel with plantain-leaf and dragon-décor in peacock blue glaze

(品名: 清孔雀藍錐拱蕉葉夔紋觚)

Decoration: **plantain-leaf**

(紋飾: 蕉葉紋)

From: National Palace Museum



Cloisonné Censer decorated with Iced Plum (1662 A.D.-1722 A.D.)



Title: Cloisonné Censer decorated with Iced Plum (品名:清 康熙 掐絲琺瑯冰梅紋雙環爐) (1662 A.D.-1722 A.D.)

Decoration: Iced Plum, Cloud (紋飾:冰梅紋，梅花同色的雲紋)

From: National Palace Museum

Painted Enamel Square Plate with Flower Decoration (1662 A.D.-1722 A.D.)

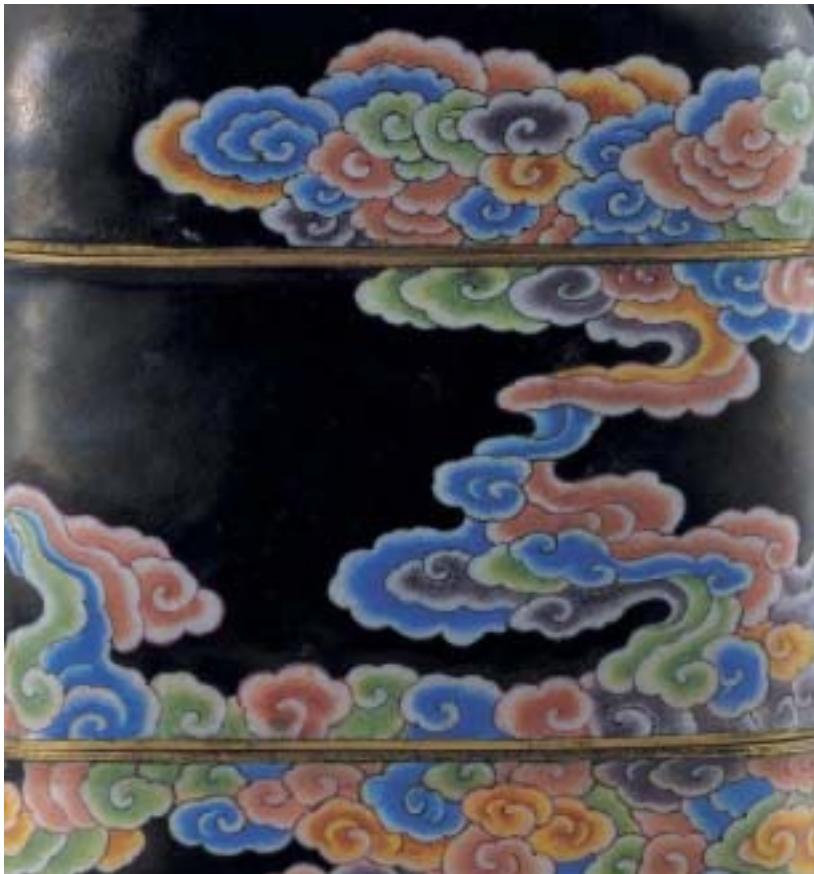


Title: Painted Enamel Square Plate with Flower Decoration (品名:畫琺瑯花卉方盤) (1662 A.D.-1722 A.D.)

Decoration: Peony, chrysanthemum, Peach, Plum, Lotus, narcissus(紋飾:牡丹、菊、桃、梅、蓮荷、水仙等折枝花)

From: National Palace Museum

Painted Enamel Box with Cloud Decoration (1723 A.D.-1735 A.D.)



Title: Painted Enamel Box with Cloud Decoration (品名:
清 雍正 畫琺瑯雲紋穿帶盒)(1723 A.D.-1735 A.D.)

Decoration: Cloud From: National Palace Museum

清雍正掐絲琺瑯鳳耳豆 (1723 A.D.-1735 A.D.)

銅胎，覆蓋式的蓋，蓋頂有唇口圓盤式鈕，蓋與器身合組成球狀器腹，器側鑲浮雕式鍍金鳳首銜環耳，環飾掐絲雲紋 (Cloud Pattern)，高足；器形是仿春秋戰國時期盛食物之青銅器豆的形制。器內光素，器表除蓋、腹與圈足上共六圈掐絲回紋 (Pattern) 外，其餘滿飾大小圓圈紋 (circle) (大圓圈內各含三個小圓圈)，填墨綠色釉，小圓圈中央在綠釉上再點白釉，白釉大多燒失。鍍金底陰刻「雍正年製」無框雙行宋體字款。掐絲粗細均勻、圓圈大小整齊畫一，精美無比，器形雋秀玲瓏爾雅，是目前所知唯一落雍正款的掐絲琺瑯器。



The Discussion: Design Elements

- TELDAP Elements: Decoration/Patterns
- TELDAP doesn't show a clear distinction between Motifs and Patterns. They are known as decorations (紋飾) .
- Under TELDAP one Motifs/Patterns database has been established. There will be about 7000 terms before Chin Dynasty (先秦銅器紋飾資料) collections made from bronze ware.
- In TELDAP there are many terms used to present iconography, for example, 年年有餘，壽山福海，太平有象等吉祥圖. However, the AAT doesn't collect such terms.
- In conclusion, how can we continue to keep a complete list of Chinese culture and decorations in the AAT?

The Procedures of developing multilingual thesaurus

- Translating AAT descriptors (A) into Chinese language (B)
- Notes:
 - Should we translate only the descriptors? If yes, then...
 - All or partial descriptors? Precedence?
 - Perhaps ordered by Facet/Hierarchies which are more important or used more often.
 - What kind of methods should we use? Computational or Intellectual?
 - Who should perform such translation? What kind of qualifications or backgrounds are we looking for? Who should examine the translation? What should we use as reference?
 - The Intellectual method : doing the basic translation. Using references such as dictionaries, encyclopedias, online search engines images to get first draft, and always cite where you get your references
 - We want to know how long it takes to translate into French or Spanish version of AAT. How much of the AAT do we need to translate?

The Procedures of developing multilingual thesaurus

- Mapping/Linking terms from the TELDAP (C) to AAT descriptors (A) or AAT Chinese language (B)
- Notes:
 - Which terms from the TELDAP should we proceed? How should we decide?
 - Are we using any principles to do such mapping/linking? (eg. Concept-based principle) If we find synonym in TELDAP, should we just find one as a descriptor, or should we collect them as a group?
 - During mapping/linking process, we encounter the following issues:
 - Semantic issue: different kinds of equivalent relations (using tables to present the mapping). Should we make third database to include all the terminologies or should we input the equivalent relations back to the original database?
 - Structural issue: cultural problems, localization problems, range of collections
 - How should we be sure the accuracy of the mapping/linking? How should we deal with it when questions arise?
 - advanced examination: have domain experts enter this stage
 - How far should we go when mapping/linking, so that we can achieve the basic function of semantic web/knowledge base (or we call Semantic Digital Libraries)

Mappings between AAT & TELDAP, within the TELDAP

- Semantic issues
 - Equivalence relations
 - Exact equivalence
 - Inexact or near equivalence
 - Partial equivalence
 - Single-to-many equivalence
 - Non- equivalence
- Structural issues
 - Hierarchical and associative relations
 - A symmetrical thesaurus vs. a non-symmetrical thesaurus

The Procedures of developing multilingual thesaurus

- Dealing with missing mapping/linking terms (non-equivalence) : (D) & (E)
- (D)- Only AAT has descriptors (A), but TELDAP doesn't have any terms to map (C)

- Note:

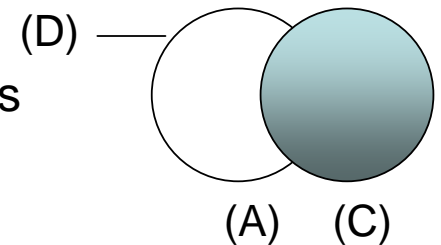
- Depend on if this task is a symmetric thesaurus

- Should we examine all of these descriptors?

- (Should we choose the ones that are most likely be used in TELDAP)

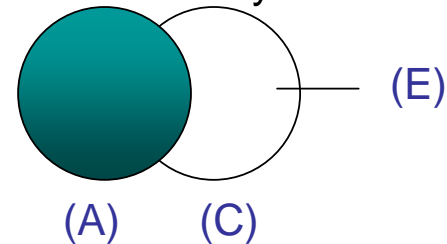
- Which ones won't be examined at the moment? (The ones are rarely used by the TELDAP)

- When examine these descriptors, what sub-procedures should we follow?



The Procedures of developing multilingual thesaurus

- Dealing with missing mapping/linking terms (non-equivalence) : (D) & (E)
- (E)- Only TELDAP has terms (C) , but AAT doesn't have any terms to map (A).



- Note:
 - Should we translate all of these terms into English, and furthermore should we also include them in the AAT?
 - Should we integrate the related terms under the same concept before we translate into English? Should we follow the AAT Editorial Rule when we perform the integration process?
 - We need domain experts to examine the following tasks:
 - Translating terms into English
 - Developing structures or extensions that would allow the AAT to include the new terms that we've translated, or to put into our AAT in Chinese version.

Summary and Suggestions

- What are some alternative ways to perform the translation and mapping/linking so that we can solve the limitation issues of collecting terms from specific metadata elements of the collection project?
 - Solution: to look at the dominating concept, for example, Ceremony
- Metadata Quality
 - There are different qualities of metadata records among collection projects that would cause many difficulties while doing integration and mapping. To prevent such problem in the future, we may use the AAT and AAT in Chinese as a guidance for designing metadata.
- We want to form a varieties of different discipline groups, including:
 - Domain experts: eg. Art History
 - Information/knowledge organization specialties
 - Computer Science experts
- We need a comprehensive methodology
 - Framework
 - Best Practices/Editorial Rule
- TELDAP and Getty should establish partnership together
 - Write on Memo
 - set the common objectives, strategies, tasks, and schedule
 - Develop communication platform